

# **Fatal Gas Accident Data Report**

**Australia & New Zealand Financial Years  
2005 – 2017**

## **This Report Covers:**

- Definitions & classifications
- Summary of 2016-2017 year
- Series of graphs & tables for data supplied covering the period 1 July 2005 to 30 June 2017
  1. LPG Fatal Accidents
  2. Natural Gas (NG) Fatal Accidents
  3. Gas Fatalities
  4. Tables - Fatal Accidents Information

### **Disclaimer**

In all cases, anyone proposing to rely on or use the information in this document should independently verify and check the accuracy, completeness, reliability and suitability of that information for their own purposes. Accordingly, neither the members of the Gas Technical Regulators Committee or the government bodies and agencies they represent make any representations or warranty as to the accuracy, completeness, reliability or suitability for a particular purpose of the information in this document. Persons reading or utilising this document acknowledge that the Gas Technical Regulators Committee, the government bodies and agencies they represent and their officers, employees, agents and consultants shall have no liability (including liability to any person by reason of negligence or negligent misstatement) for any statements, opinions, information or matter (express or implied) arising out of, contained in or derived from, or for any omissions from, the information in this document, except insofar as liability under any State, Territory or Commonwealth statute cannot be excluded.

## **Definitions and Classifications**

### **Fatal gas accident**

Any fatal event that results from gas (fuel gas or combustion) poisoning or suffocation, burn or injury by direct involvement of gas and gas equipment except if linked to the initial event of a natural disaster, criminal activity, suicide or self-harm.

#### **Accident type**

CO poisoning – Unburned fuel gas  
CO poisoning – Incomplete combustion  
Unexpected and complete failure  
Fire, explosion  
Gas inhalation – Unburned fuel gas  
Gas leak, escape  
Excavation (third party hit)  
Overheating  
Other

#### **Equipment site (environment)**

Domestic  
Commercial  
Industrial  
Vehicle  
Marine craft  
Recreation site  
Other

#### **Equipment type**

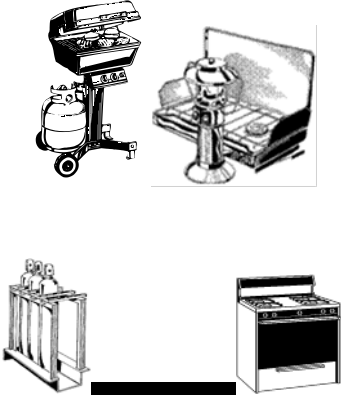
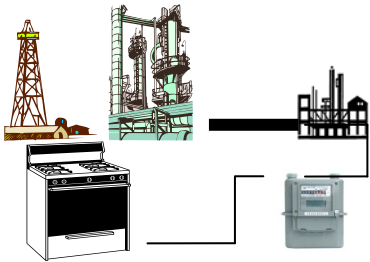
Barbecue  
Compressor  
Container (cylinder)  
Cooker, oven  
Dispenser  
Fuel cell  
Heater - Cabinet heater (NZ only)  
Heater - External Unflued (Patio heater)  
Heater – Pool  
Heater - Open Flued  
Heater - Balanced Flue  
Heater - Power Flued  
Heater - Unflued but not cabinet heater  
Heater - Ducted  
Installation pipework  
Laundry Dryer  
Light, torch

Mains, services & regulator stations  
Refrigerator  
Storage Vessel  
Vaporiser  
Water Heater – Storage  
Water Heater – Instantaneous  
Water Heater – Boiler  
  
Water Heater – Other  
Decorative log effect appliances  
Commercial catering equipment  
Type B (eg stationary engines, kilns, furnaces)  
Other

# Summary of 2016-17

## Gas Accidents

This page covers the 12 month period from 1 July 2016 to 30 June 2017. It is based on details of incidents reported to gas safety regulators in Australia and New Zealand.

	<p style="text-align: center;"><b>LPG (2016-17 only)</b></p> <ul style="list-style-type: none"><li>• A gas explosion in a caravan causing one fatality</li><li>• Gas release from cylinder ignited and a person received fatal burns.</li></ul>
	<p style="text-align: center;"><b>Natural Gas (NG) (2016-17 only)</b></p> <ul style="list-style-type: none"><li>• None</li></ul>

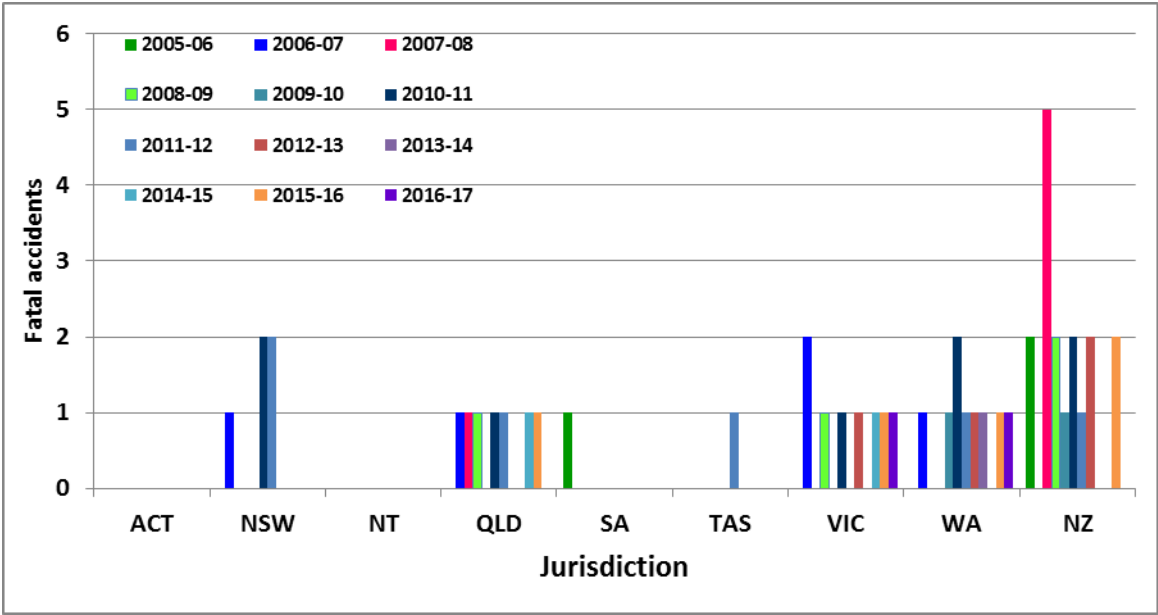
This report presents the information in a series of charts and tables.

The following sections present data supplied in a series of charts and tables for years 2005-2017.

**1- LPG Fatal Accidents**

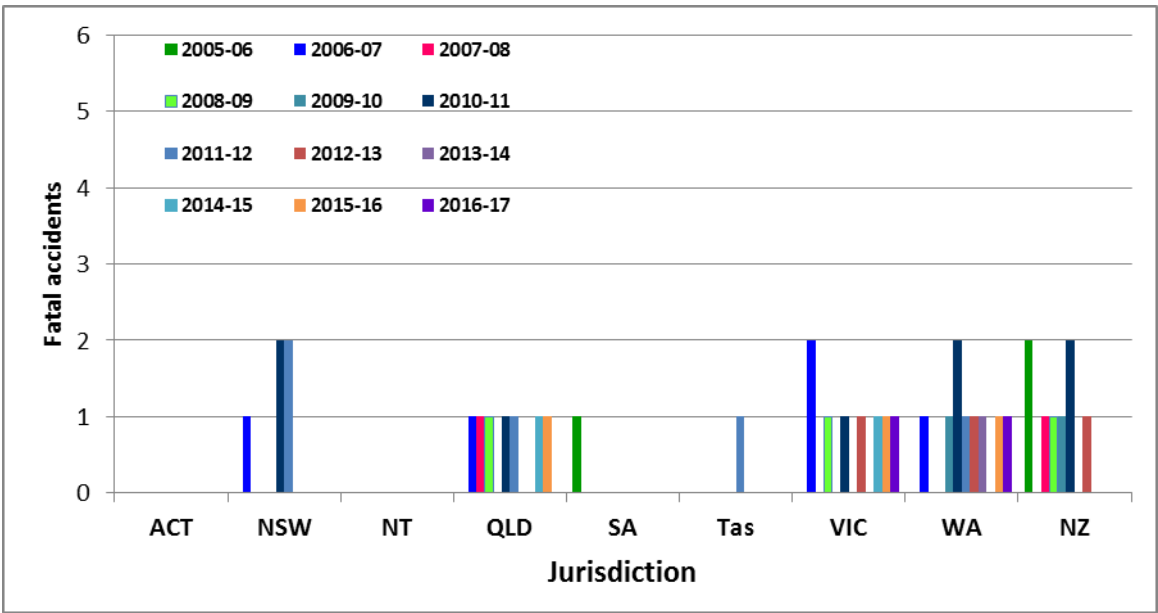
**GRAPH 1.1a Australia & New Zealand (NZ) LPG Fatal Accidents**  
*(Inclusive of NZ cabinet heater appliances)*

➤ *By State/country*



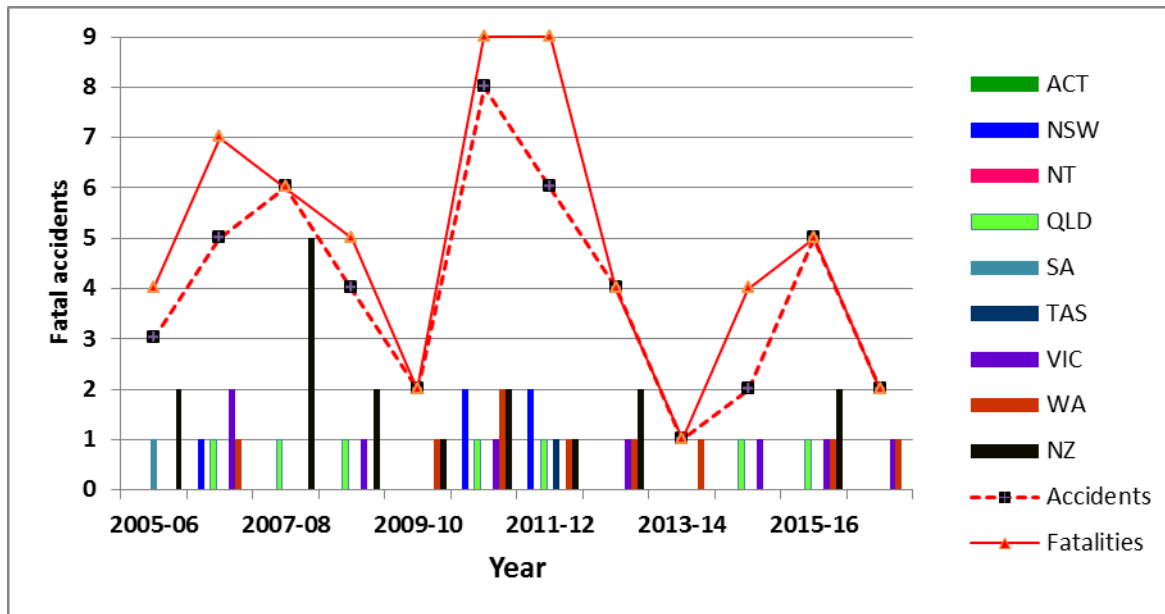
**GRAPH 1.1b Australia & New Zealand LPG Fatal Accidents**  
*(Exclusive of NZ cabinet heater appliances)*

➤ *By State/country*



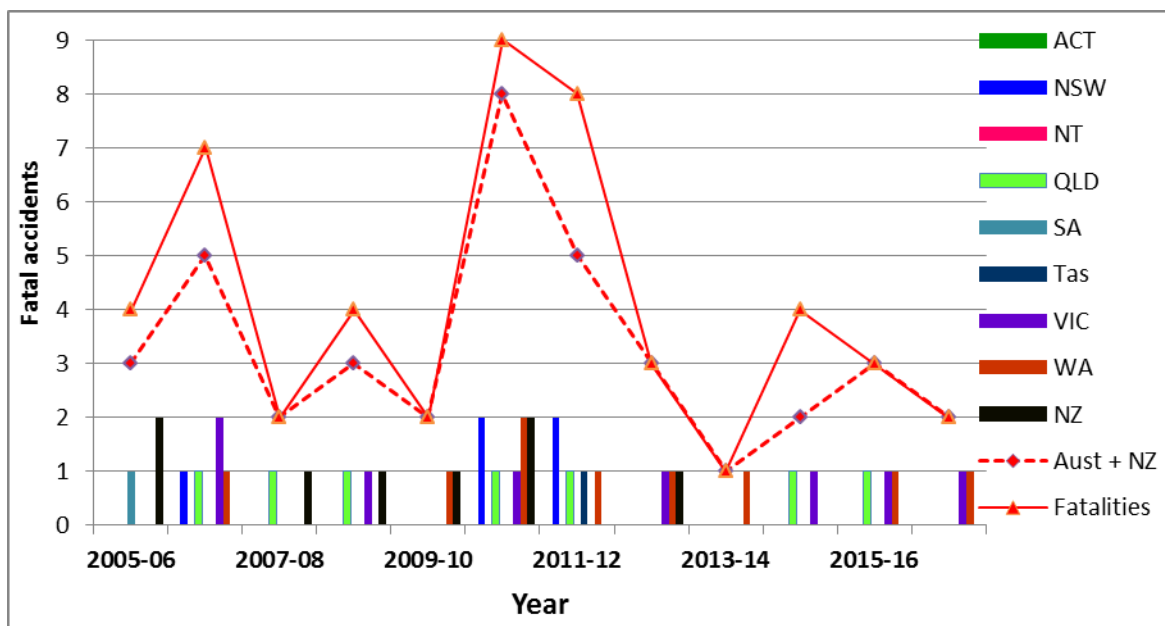
**GRAPH 1.2a Australia & New Zealand LPG Fatal Accidents**  
*(Inclusive of NZ cabinet heater appliances)*

➤ *By Year*



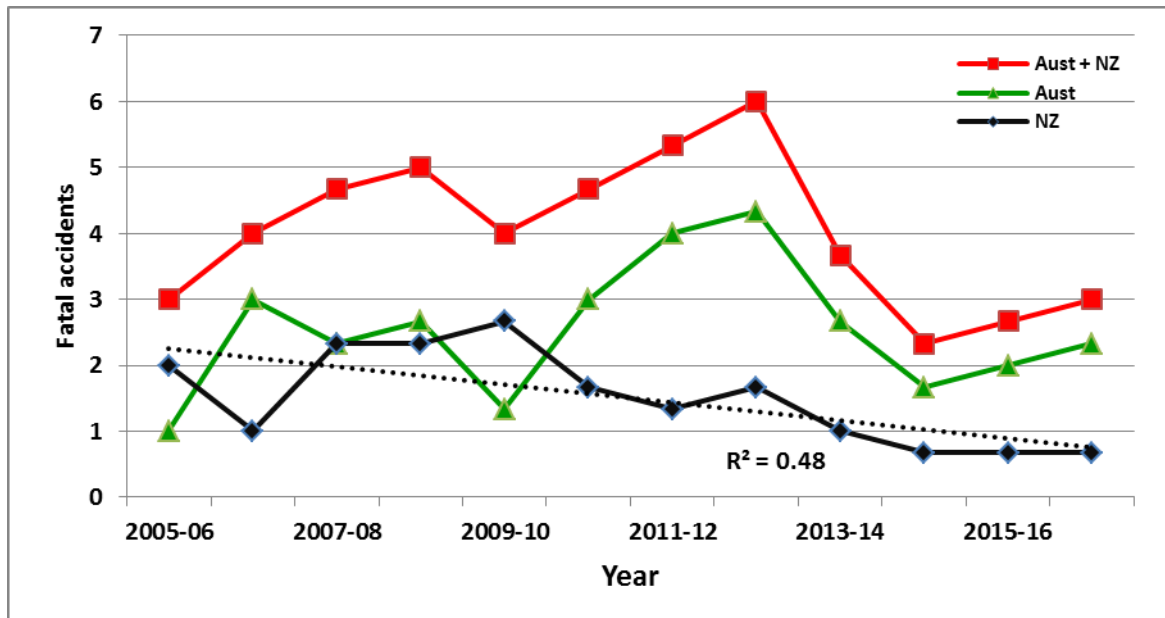
**GRAPH 1.2b Australia & New Zealand LPG Fatal Accidents**  
*(Exclusive of NZ cabinet heater appliances)*

➤ *By Year*



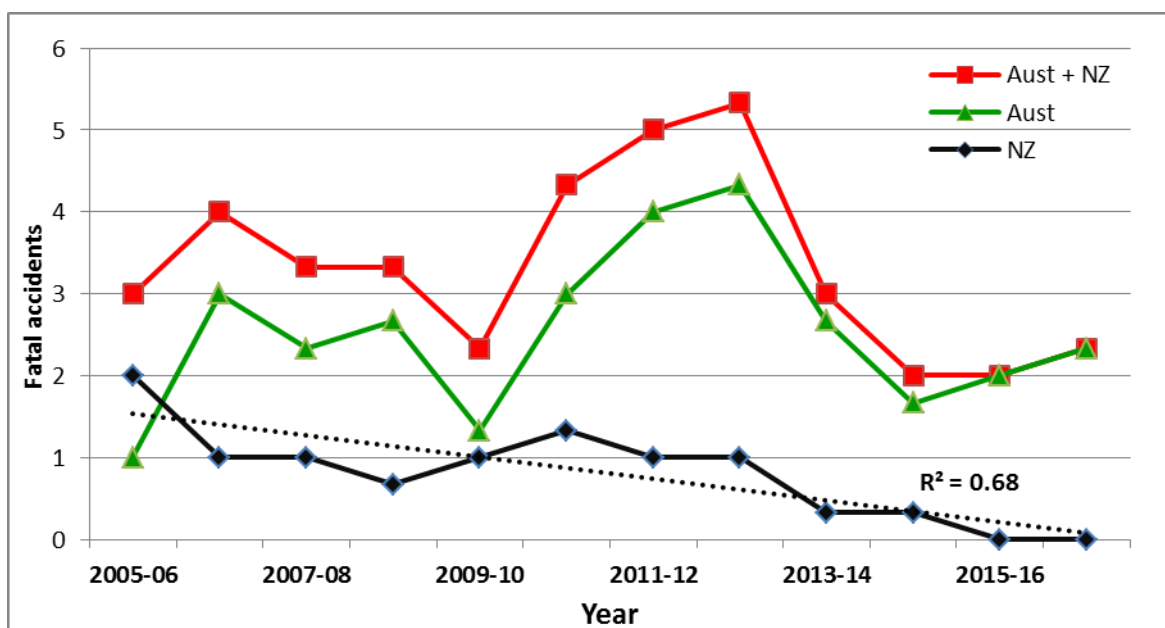
**GRAPH 1.3a Australia & New Zealand LPG Fatal Accidents**  
*(Inclusive of NZ cabinet heater appliances)*

➤ *By Country (three year running average)*



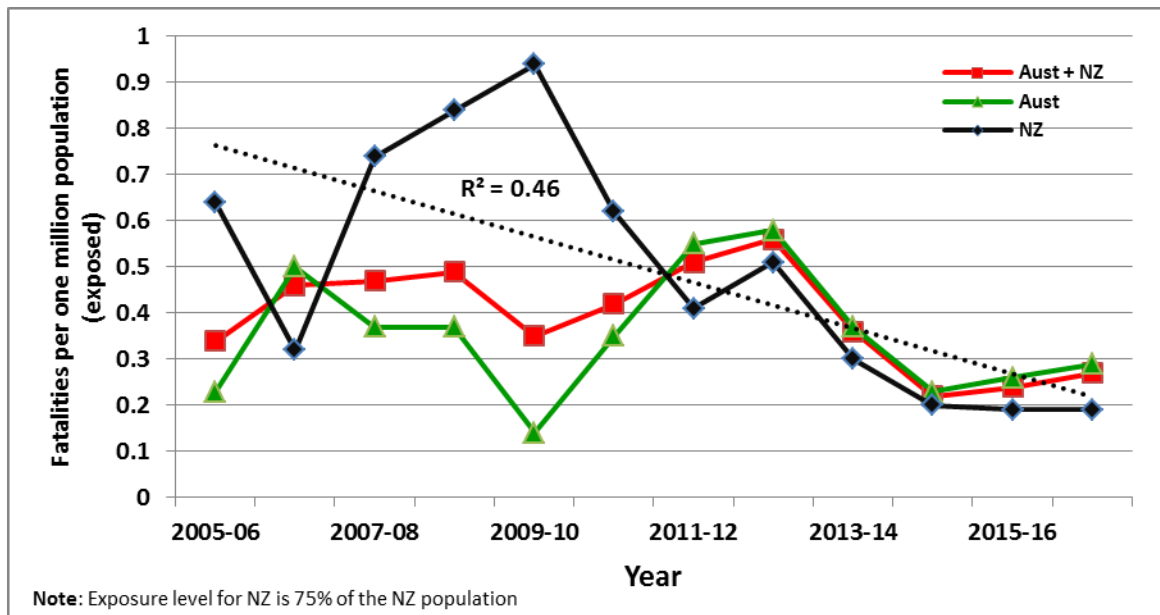
**GRAPH 1.3b Australia & New Zealand Fatal Accidents**  
*(Exclusive of NZ cabinet heater appliances)*

➤ *By Country (three year running average)*



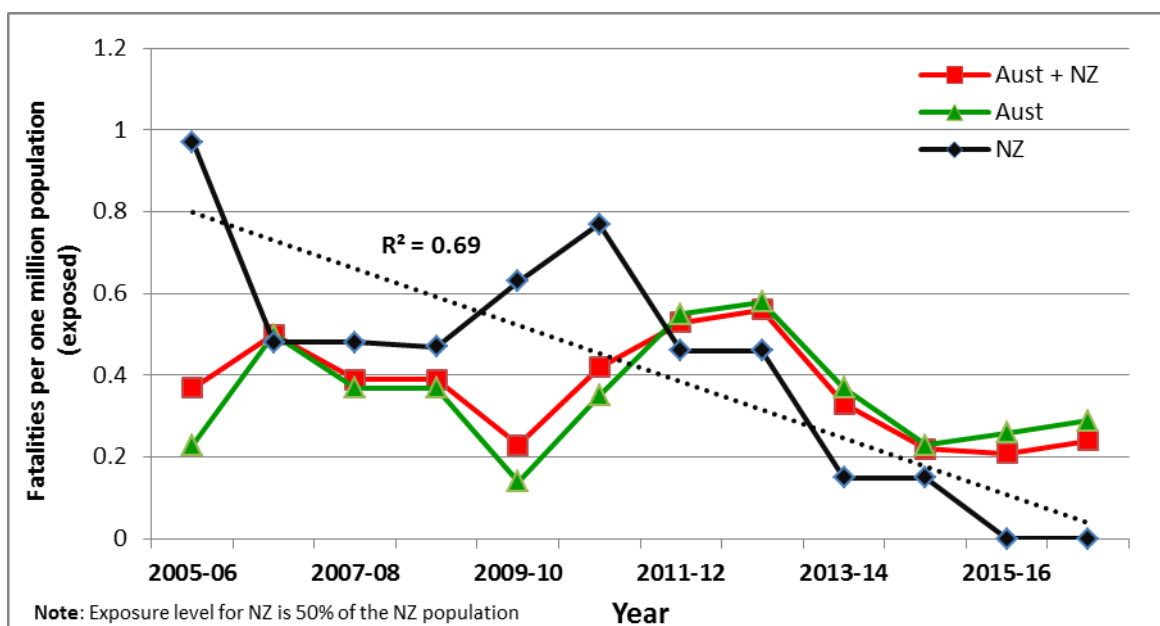
**GRAPH 1.4a Australia & New Zealand LPG Fatality Trend**  
*(Inclusive of NZ cabinet heater appliances)*

- *By Country (three year running average fatality per million population exposed in Australia and New Zealand)*



**GRAPH 1.4b Australia & New Zealand Fatality Trend**  
*(Exclusive of NZ cabinet heater appliances)*

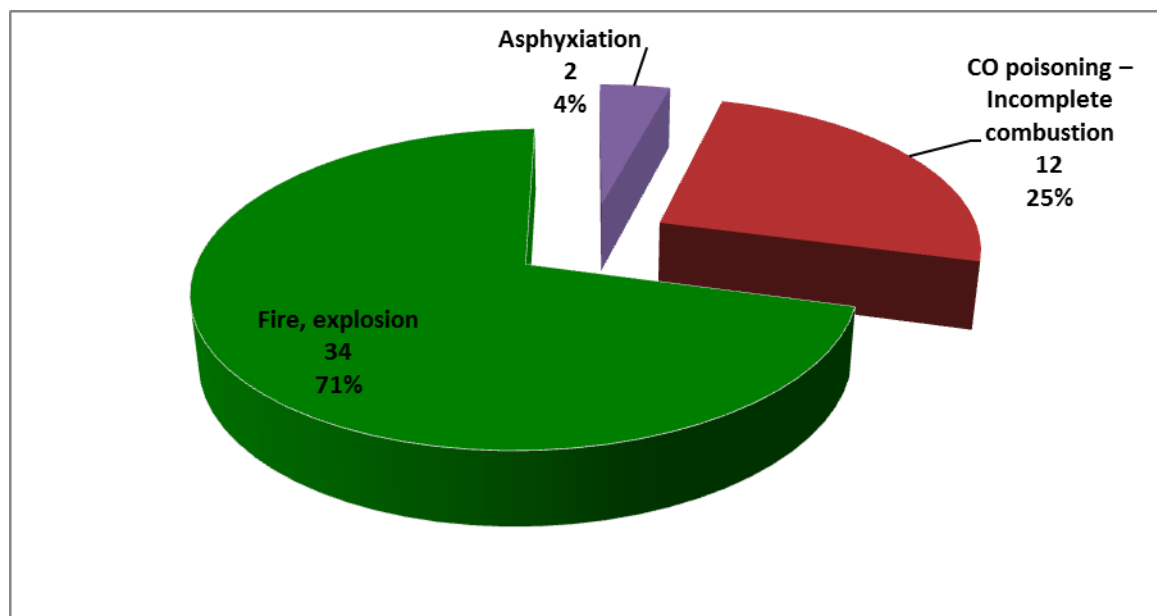
- *By Country ((three year running average fatality per million population exposed in Australia and New Zealand)*





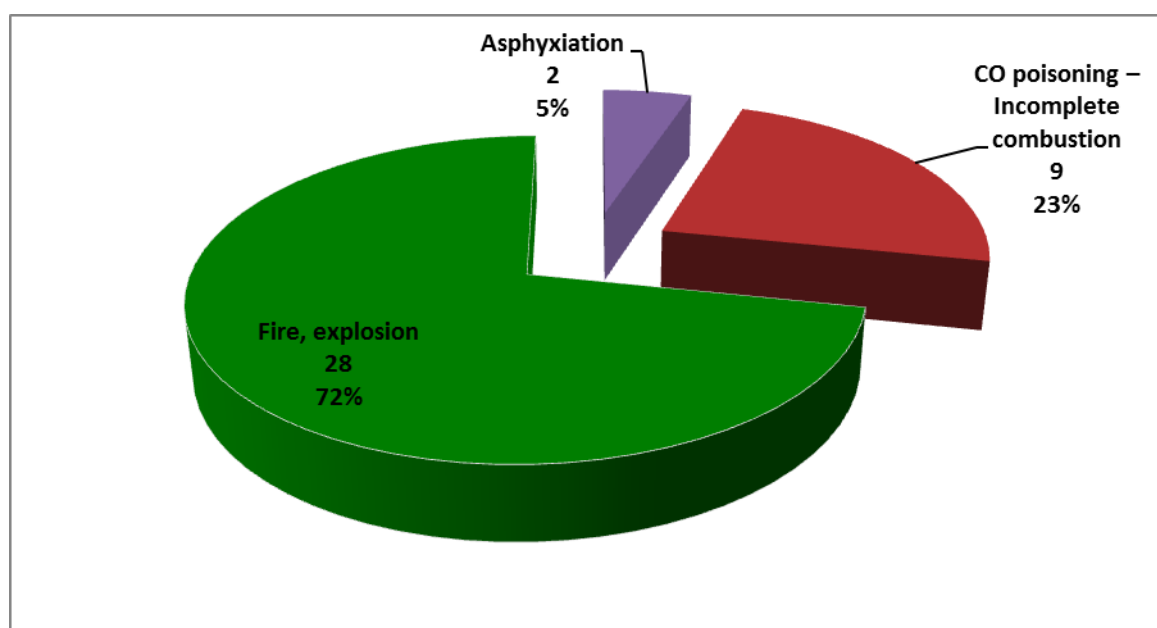
**GRAPH 1.5a Australia & New Zealand LPG Fatal Accidents**  
*(Inclusive of NZ cabinet heater appliances)*

➤ **By Accident Type**



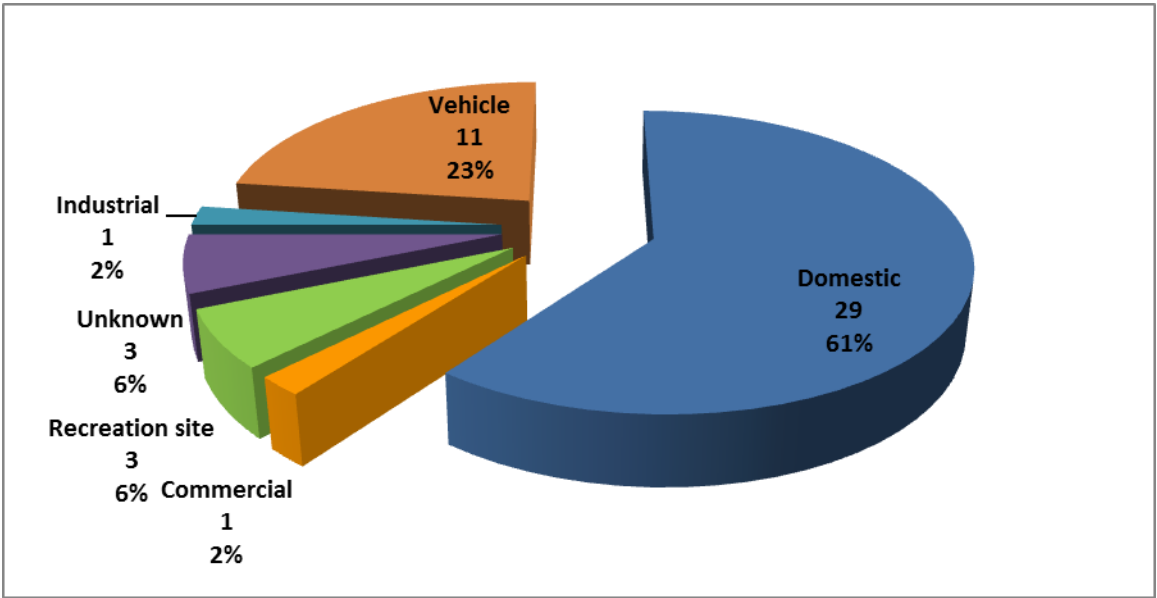
**GRAPH 1.5b Australia & New Zealand LPG Fatal Accidents**  
*(Exclusive of NZ cabinet heater appliances)*

➤ **By Accident Type**



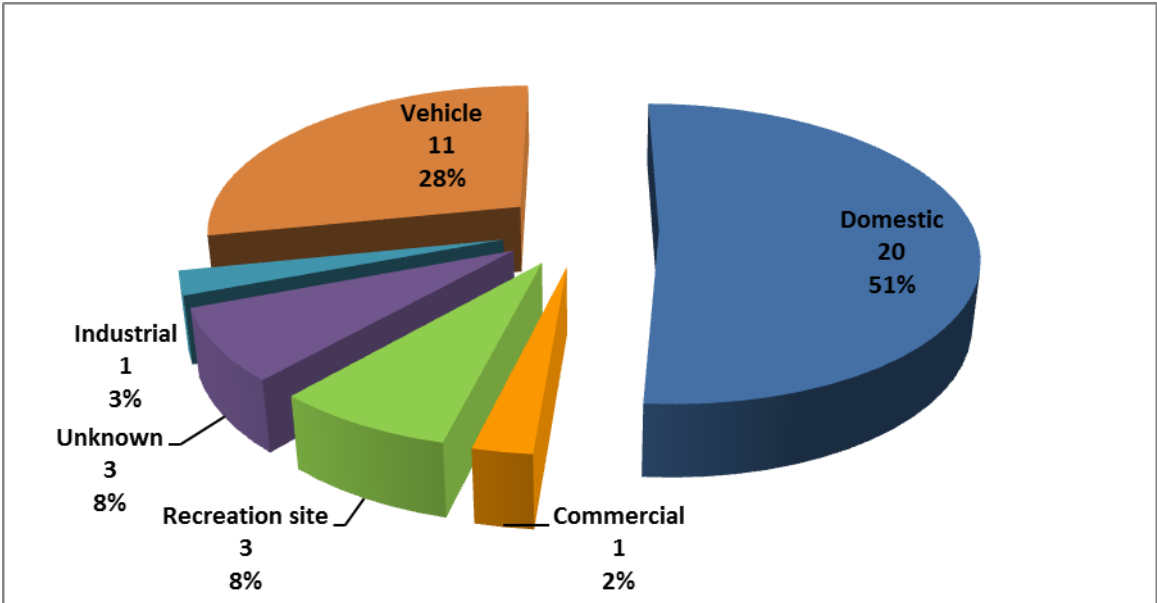
**GRAPH 1.6a Australia & New Zealand LPG Fatal Accidents**  
*(Inclusive of NZ cabinet heater appliances)*

➤ *By Equipment site (environment)*



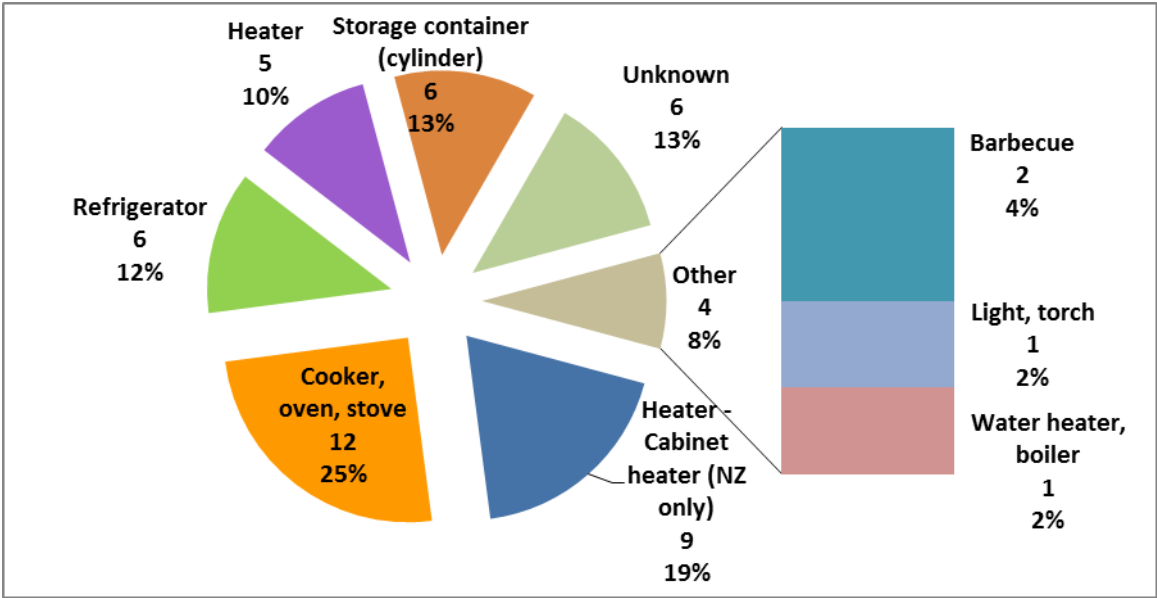
**GRAPH 1.6b Australia & New Zealand LPG Fatal Accidents**  
*(Exclusive of NZ cabinet heater appliances)*

➤ *By Equipment site (environment)*



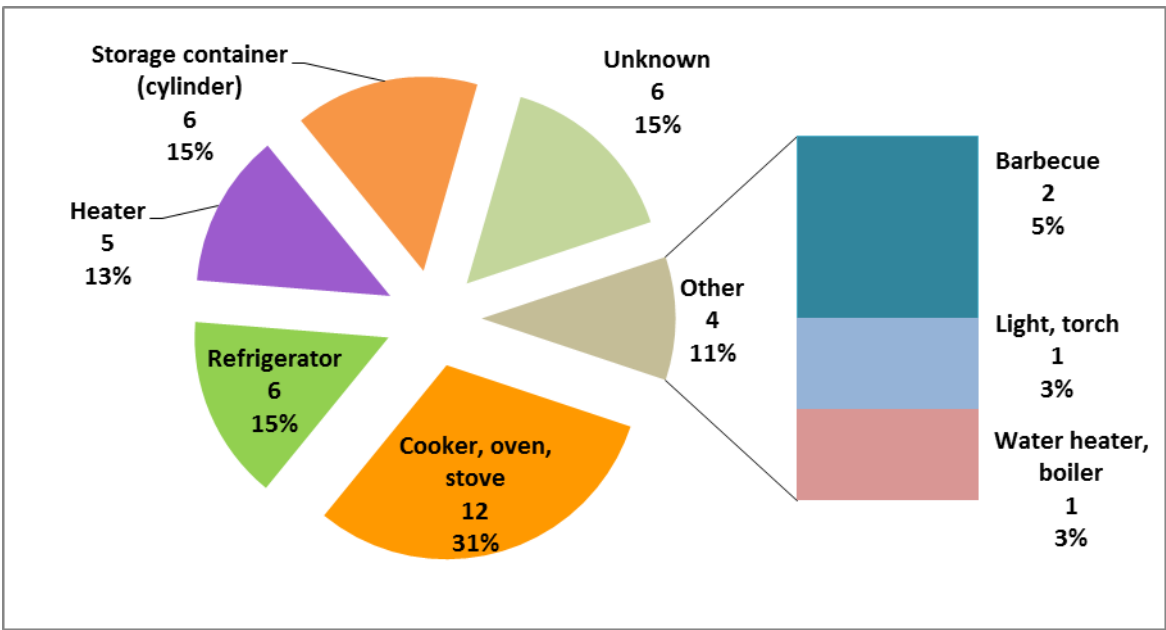
**GRAPH 1.7a Australia & New Zealand LPG Fatal Accidents**  
*(Inclusive of NZ cabinet heater appliances)*

➤ *By Equipment*



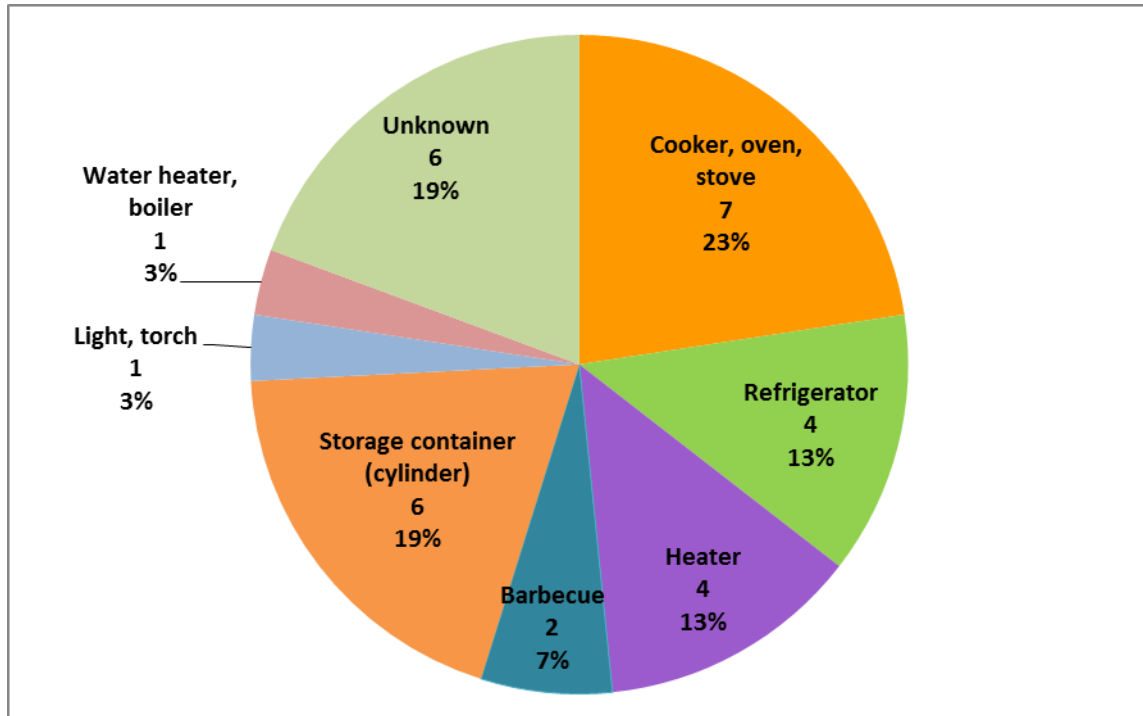
**GRAPH 1.7b Australia & New Zealand LPG Fatal Accidents**  
*(Exclusive of NZ cabinet heater appliances)*

➤ *By Equipment*



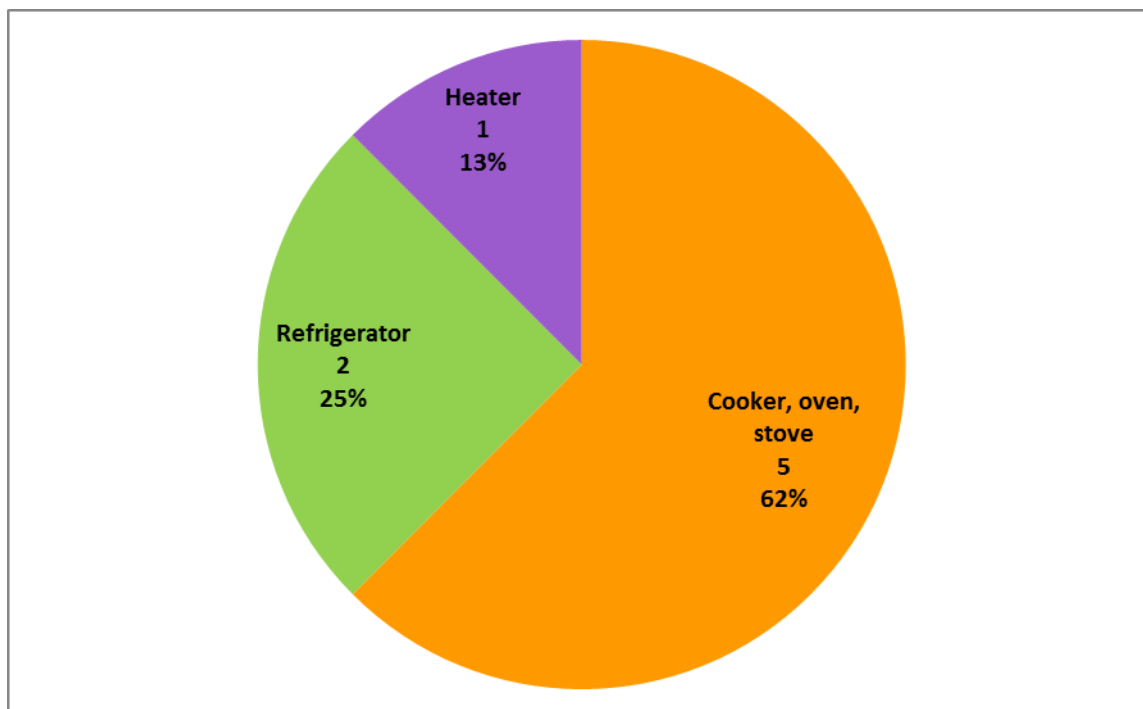
**GRAPH 1.7b (i) Australia & New Zealand LPG Fatal Accidents**  
**Australia**

➤ ***By Equipment***



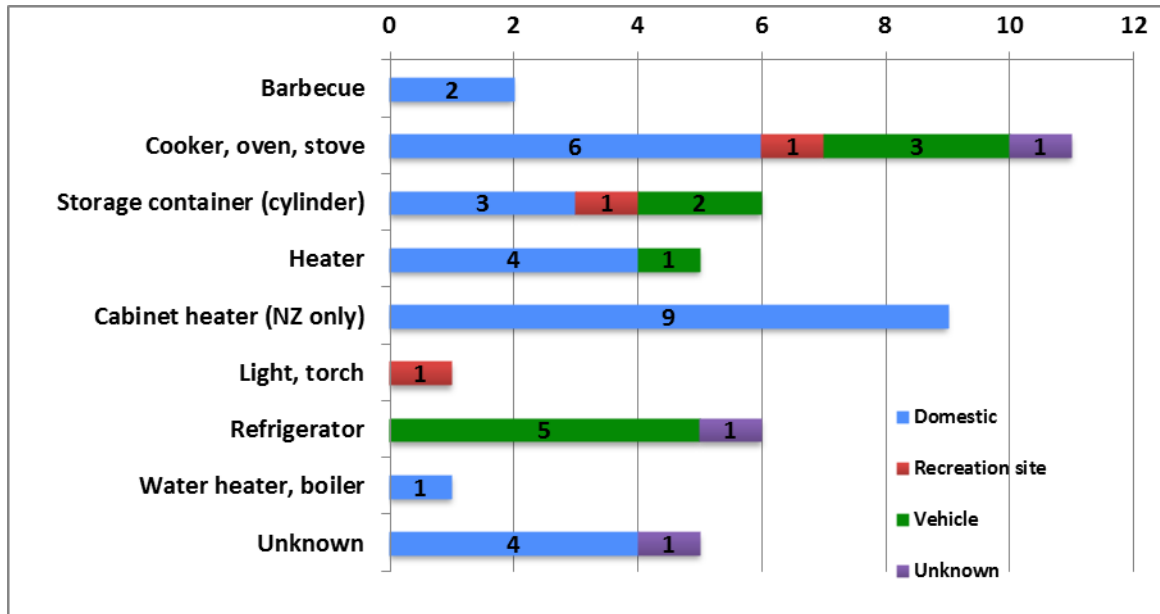
**GRAPH 1.7b (ii) Australia & New Zealand LPG Fatal Accidents**  
**New Zealand (*Exclusive of cabinet heater appliances*)**

➤ ***By Equipment***



**GRAPH 1.8 Australia & New Zealand LPG Fatal Accidents**

➤ *By Equipment & its Location*



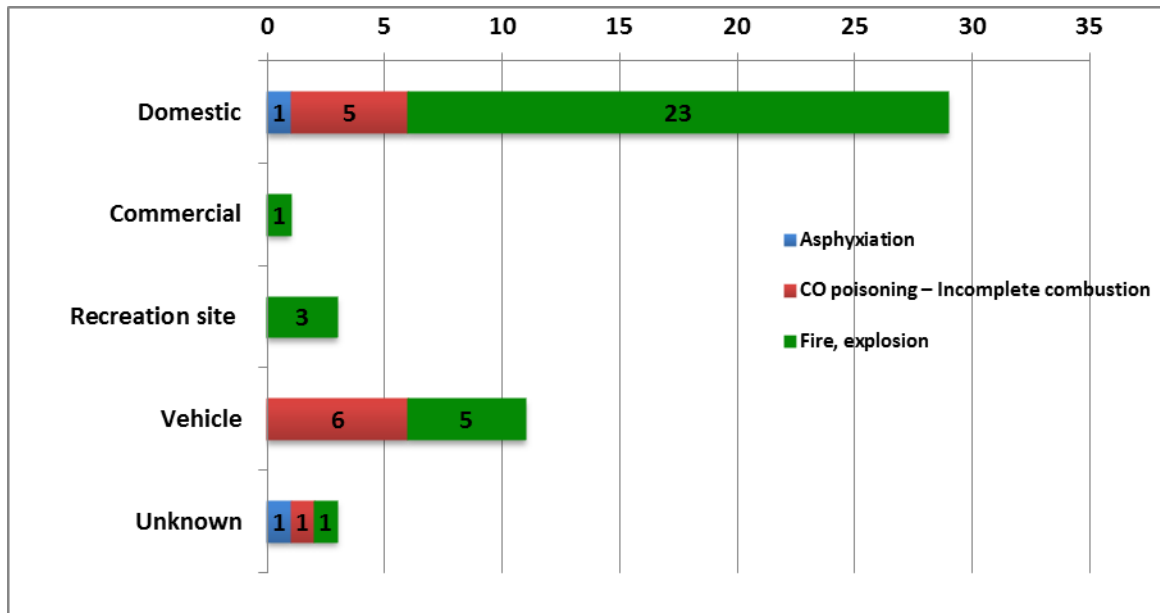
**GRAPH 1.9 Australia & New Zealand LPG Fatal Accidents**

➤ *By Equipment & Accident Type*



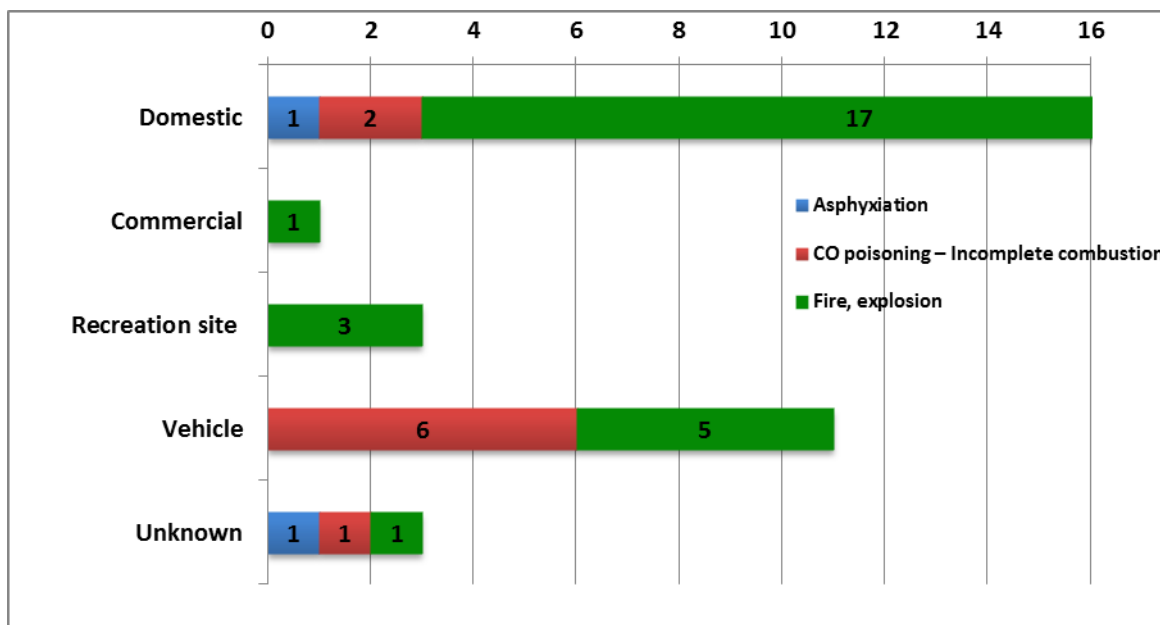
**GRAPH 1.10a Australia & New Zealand LPG Fatal Accidents**  
*(Inclusive of NZ cabinet heater appliances)*

➤ *By Equipment Site (environment) & Accident Type*



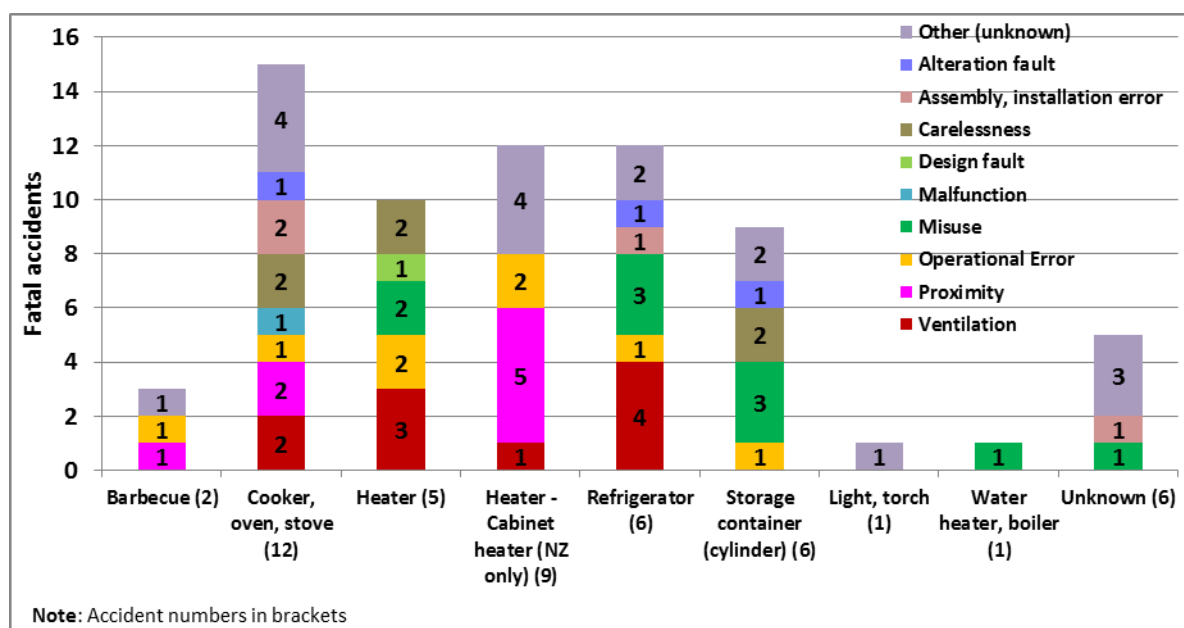
**GRAPH 1.10b Australia & New Zealand LPG Fatal Accidents**  
*(Exclusive of NZ cabinet heater appliances)*

➤ *By Equipment Site (environment) & Accident Type*



## GRAPH 1.11 Australia & New Zealand LPG Fatal Accidents

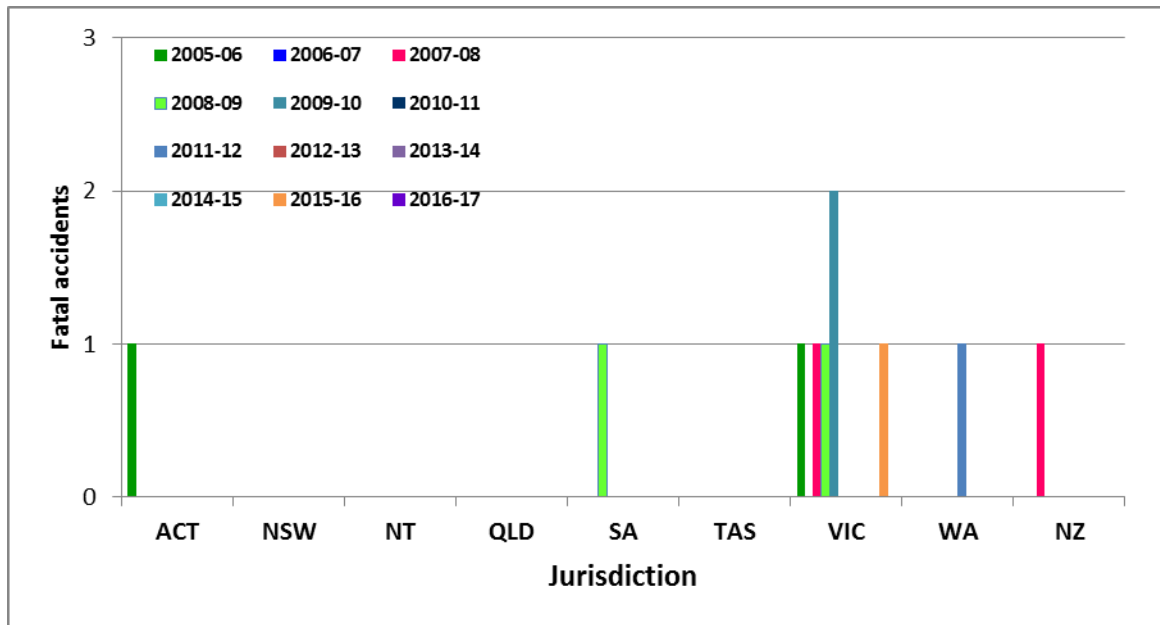
➤ *By Equipment & Causal factor*



## 2- Natural Gas (NG) Fatal Accidents

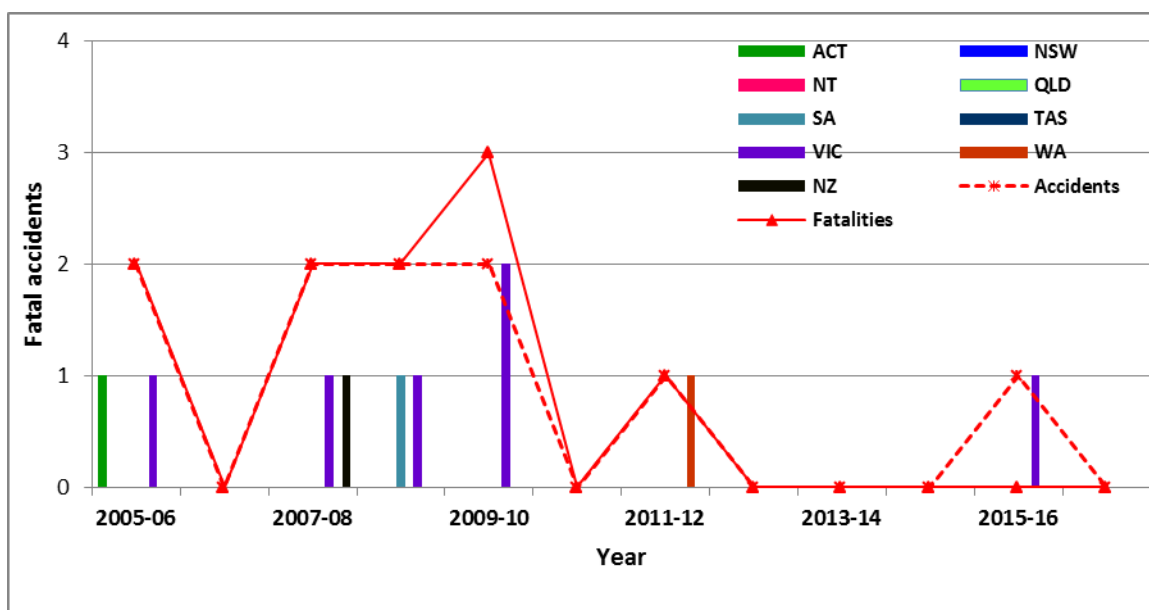
**GRAPH 2.1 Australia & New Zealand NG Fatal Accidents**

➤ *By State/country*



**GRAPH 2.2 Australia & New Zealand NG Fatal Accidents**

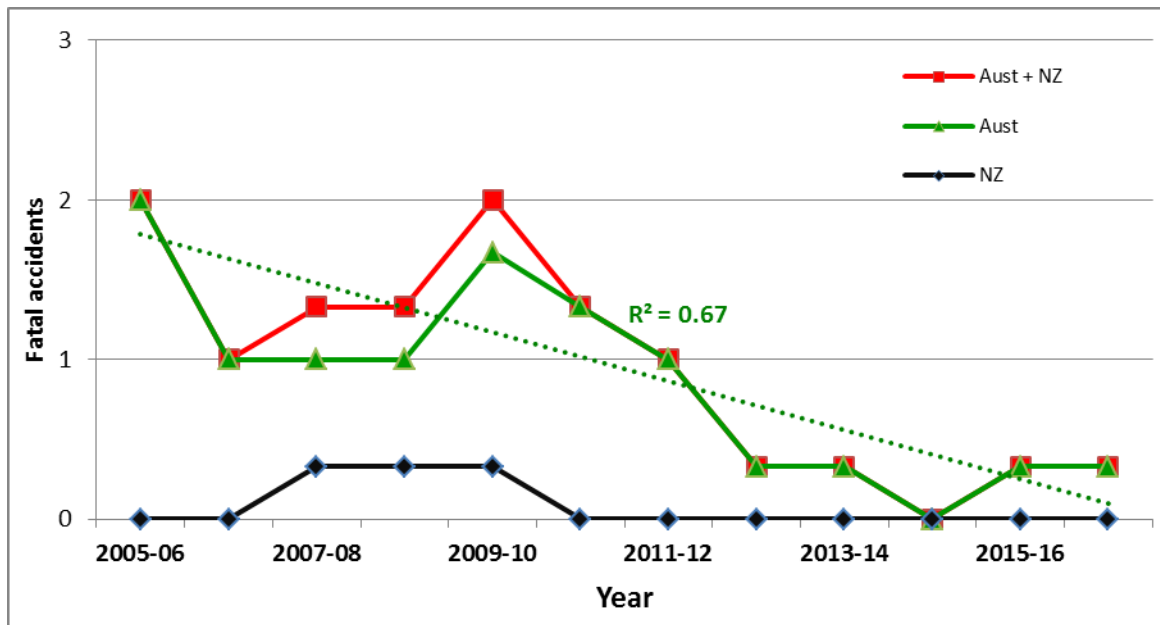
➤ *By Year*





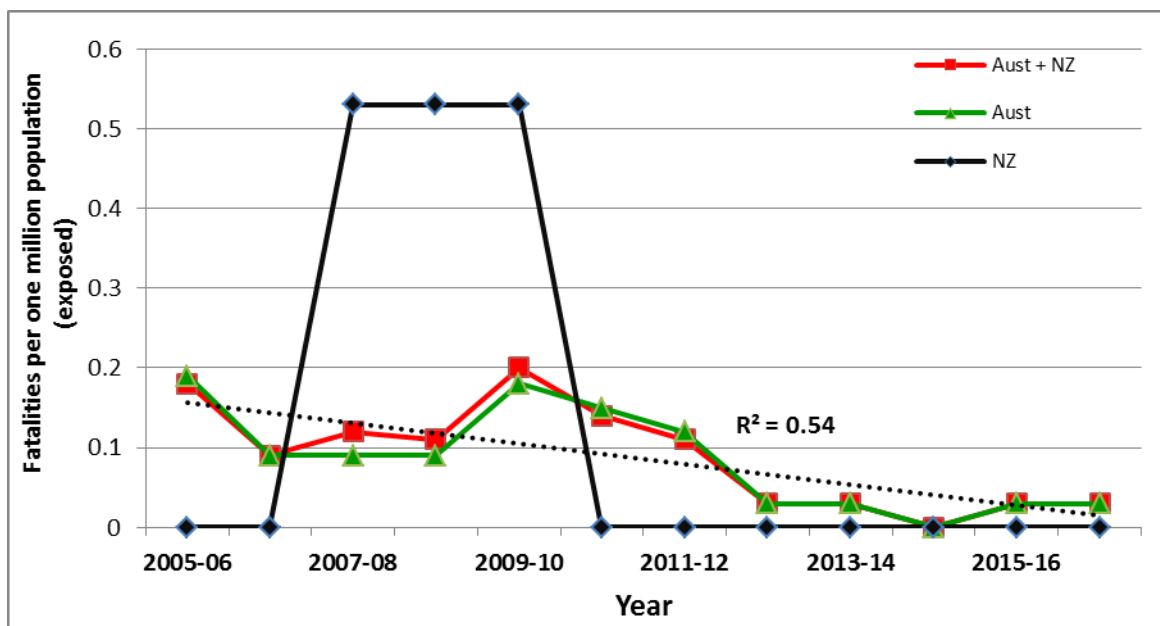
**GRAPH 2.3 Australia & New Zealand NG Fatal Accidents**

➤ *By Country (three year running average)*



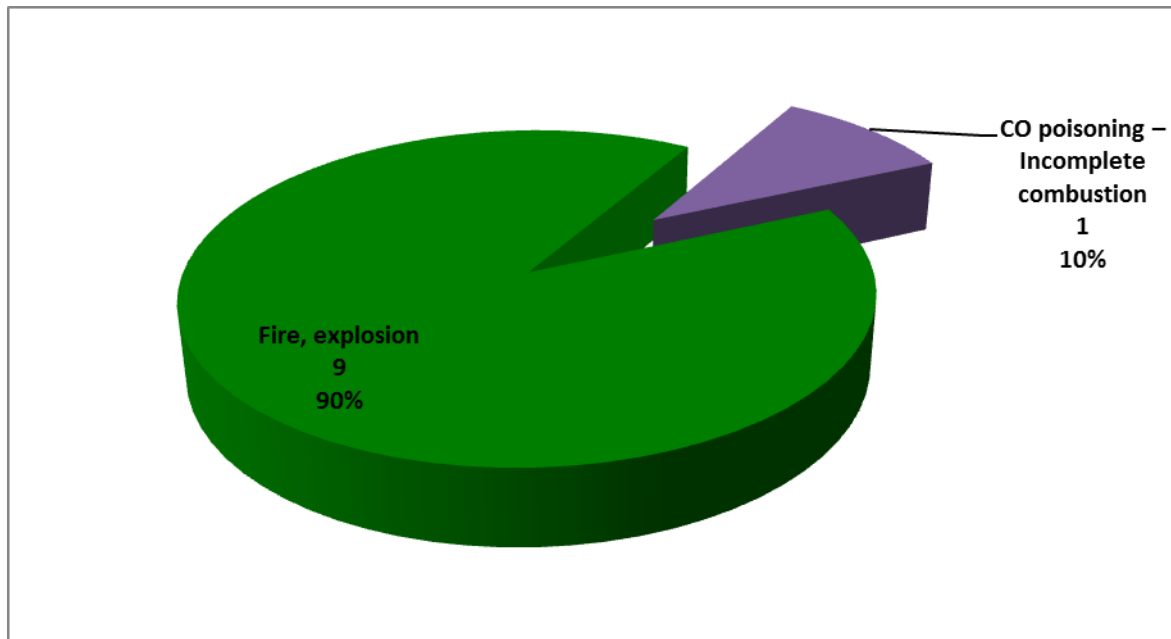
**GRAPH 2.4 Australia & New Zealand NG Fatality Trend**

➤ *By Country ((three year running average fatality per million population exposed in Australia and New Zealand))*



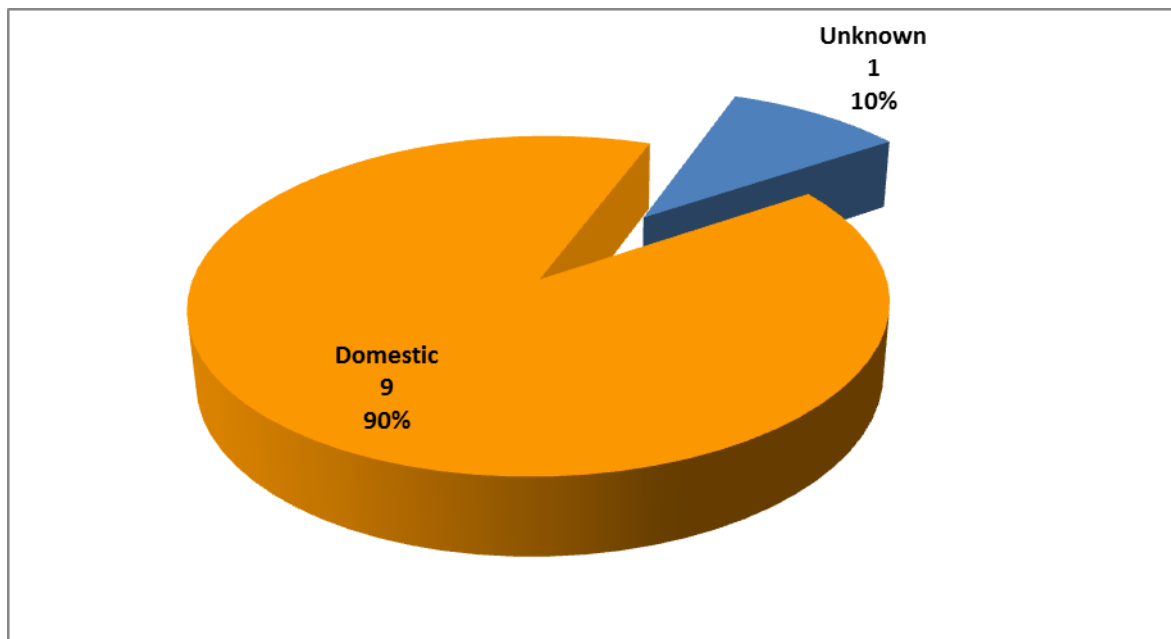
**GRAPH 2.5 Australia & New Zealand NG Fatal Accidents**

➤ *By Accident Type*



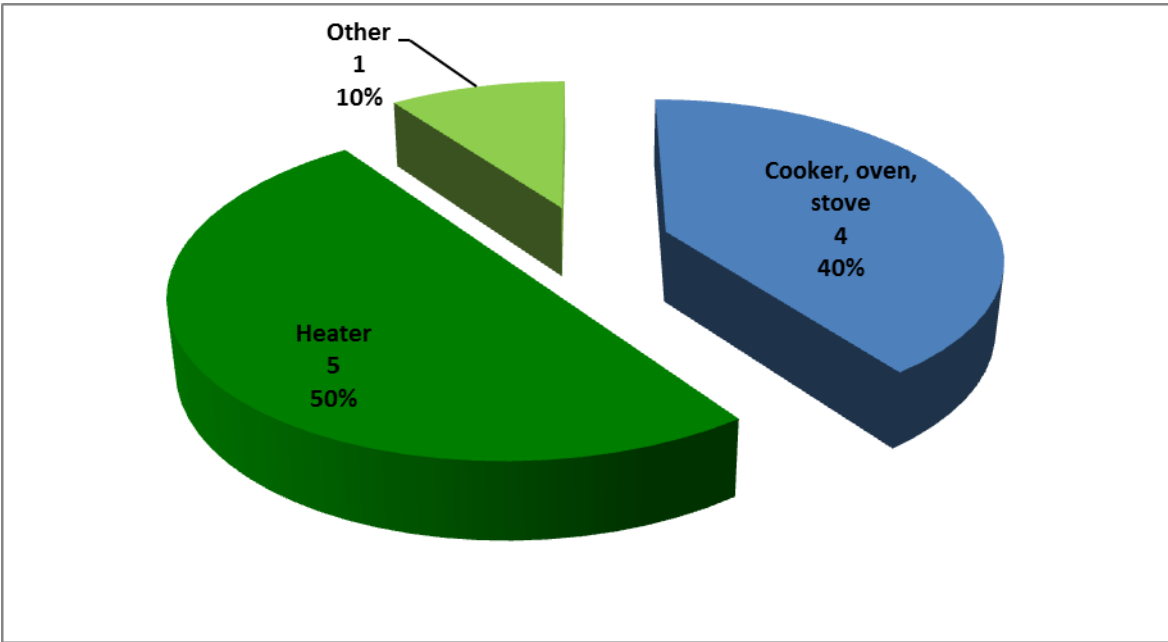
**GRAPH 2.6 Australia & New Zealand NG Fatal Accidents 6**

➤ *By Equipment site (environment)*



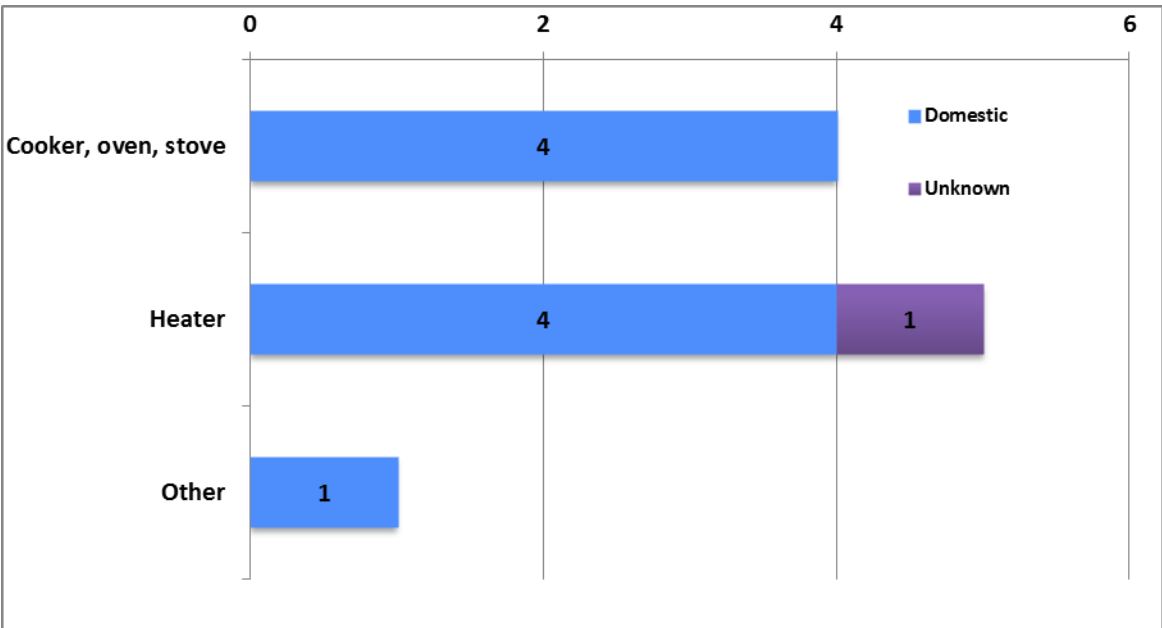
GRAPH 2.7    Australia & New Zealand NG Fatal Accidents

➤ *By Equipment*



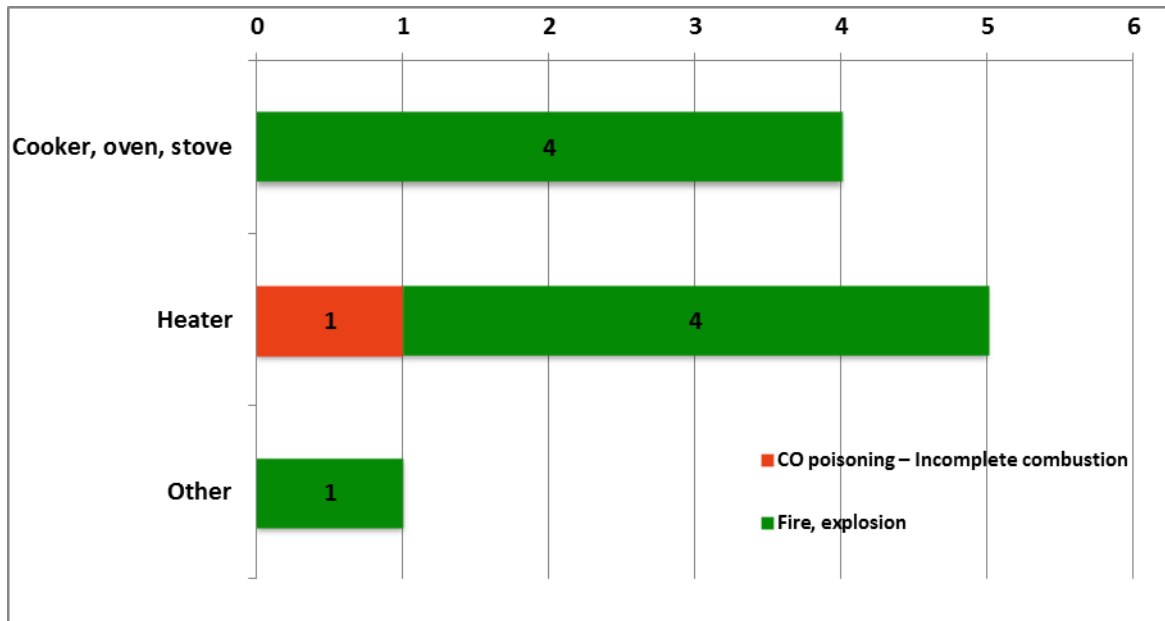
GRAPH 2.8    Australia & New Zealand NG Fatal Accidents

➤ *By Equipment & its Location*



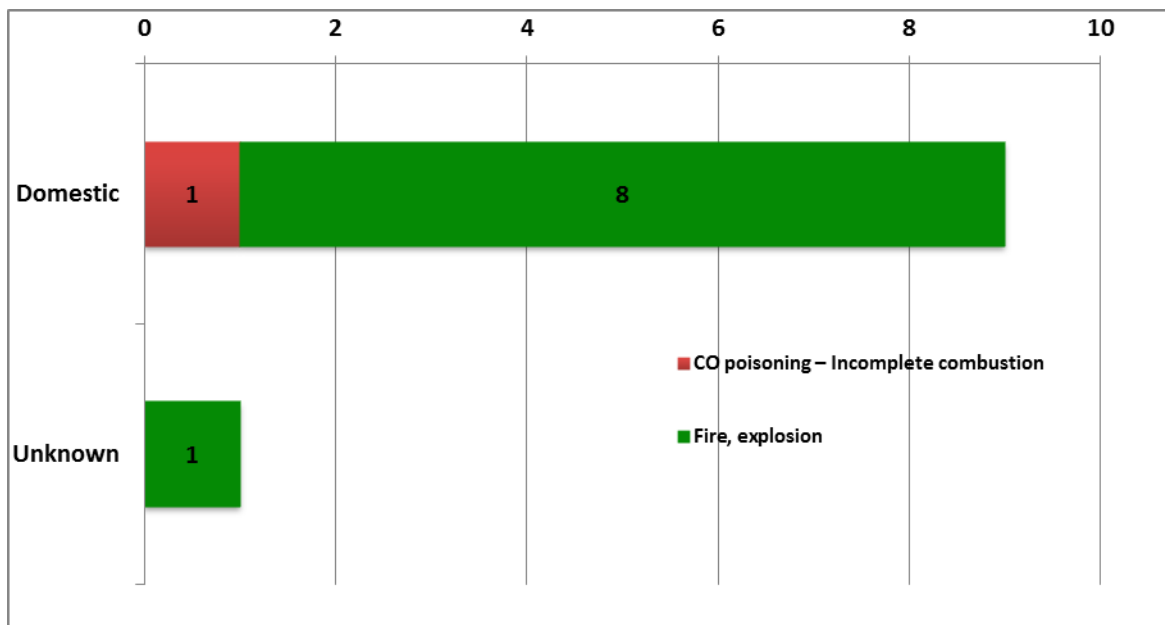
**GRAPH 2.9 Australia & New Zealand NG Fatal Accidents**

➤ *By Equipment & Accident Type*



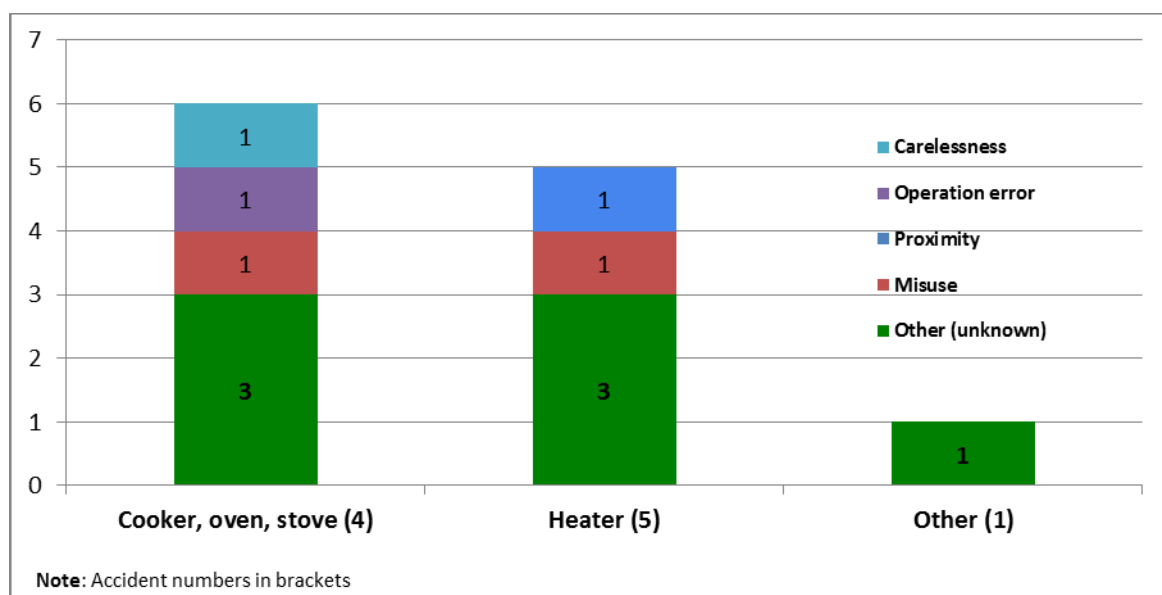
**GRAPH 2.10 Australia & New Zealand NG Fatal Accidents**

➤ *By Equipment Site (environment) & Accident Type*



**GRAPH 2.11 Australia & New Zealand NG Fatal Accidents**

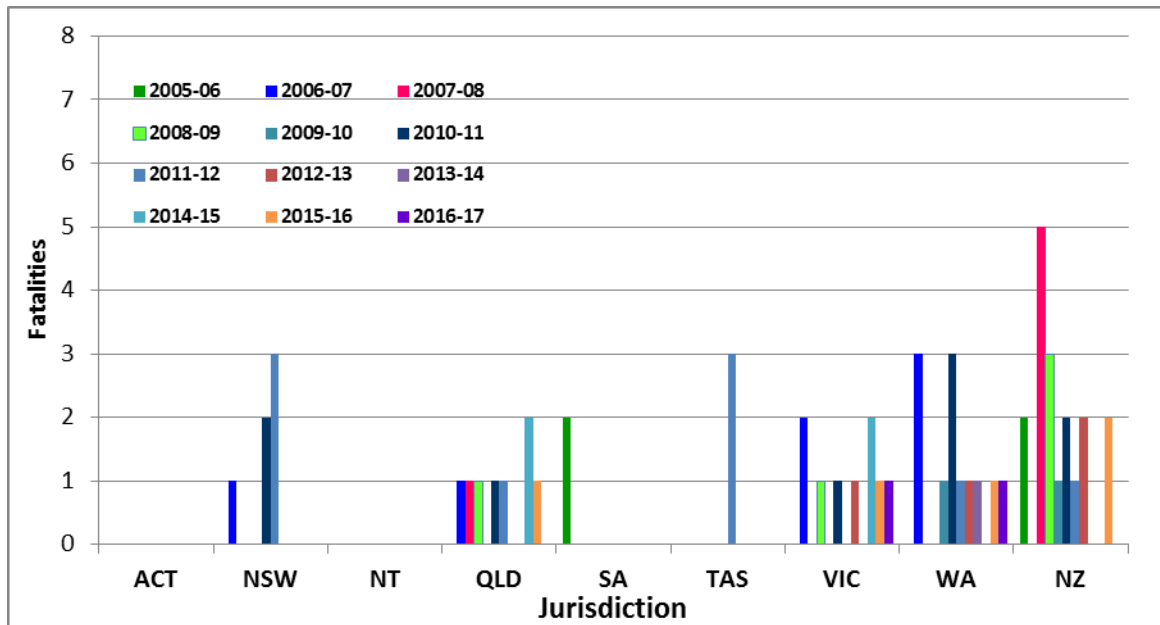
➤ ***By Equipment & Causal factor***



### 3- Gas Fatalities

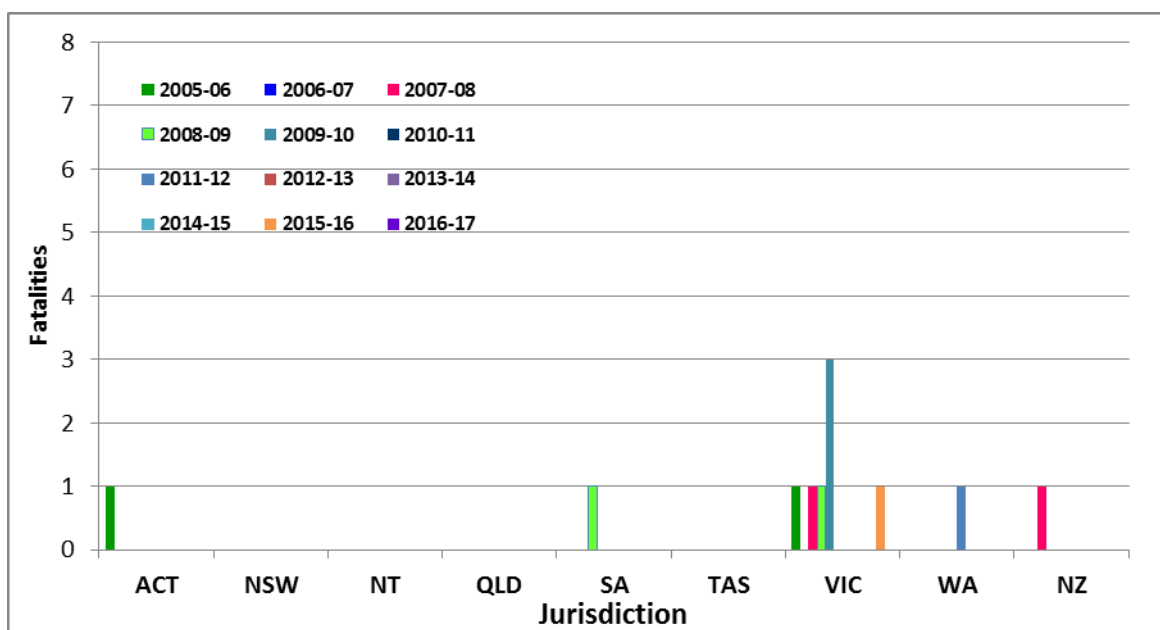
**GRAPH 3.1a Australia & New Zealand Gas Fatalities  
(LPG)**

➤ *By State/country*



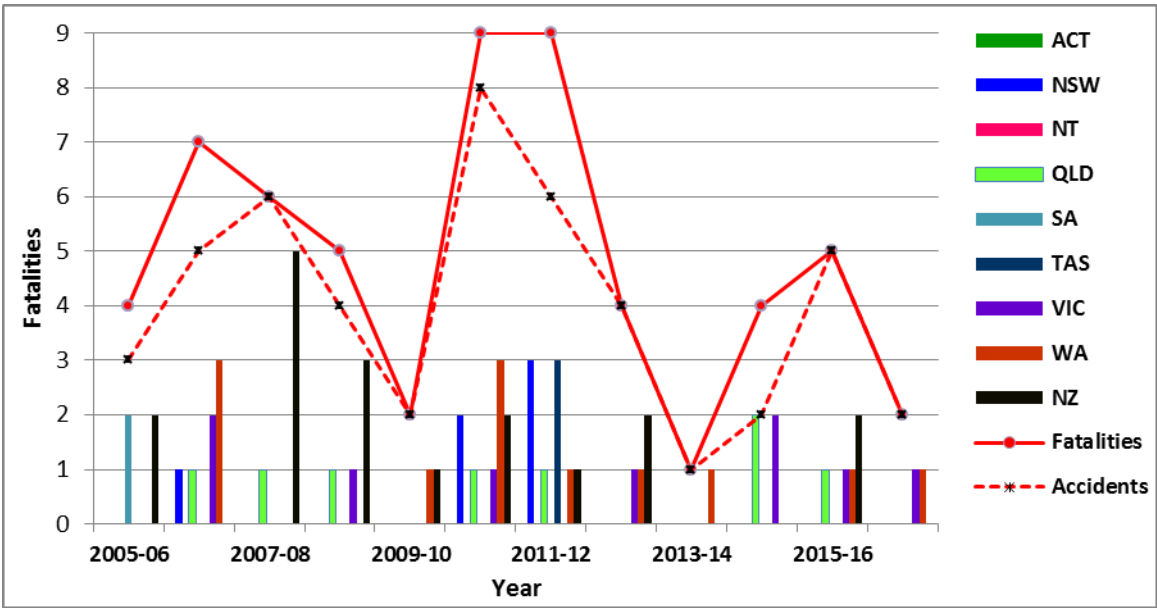
**GRAPH 3.1b Australia & New Zealand Gas Fatalities  
(NG)**

➤ *By State/country*



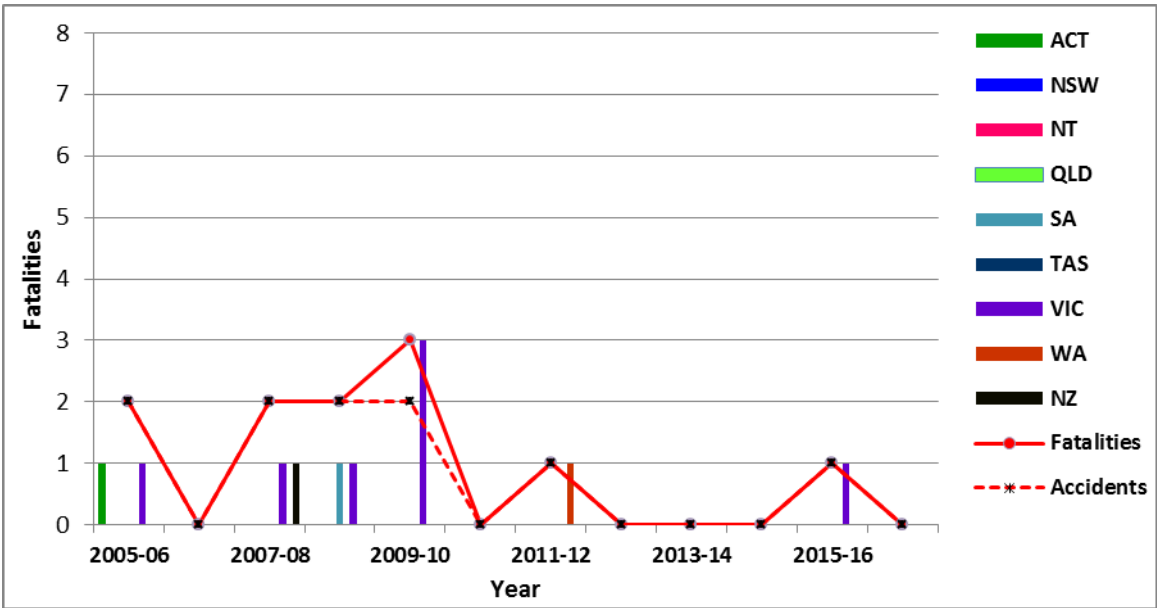
**GRAPH 3.2a Australia & New Zealand Gas Fatalities**  
*(LPG)*

➤ *By Year*



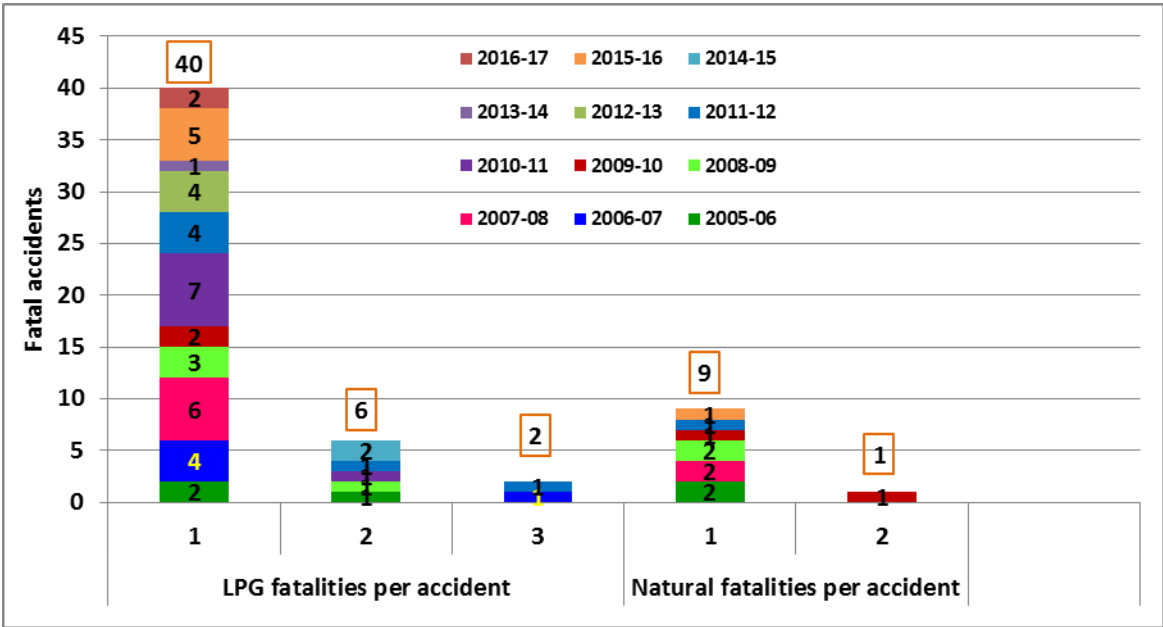
**GRAPH 3.2a Australia & New Zealand Gas Fatalities**  
*(NG)*

➤ *By Year*



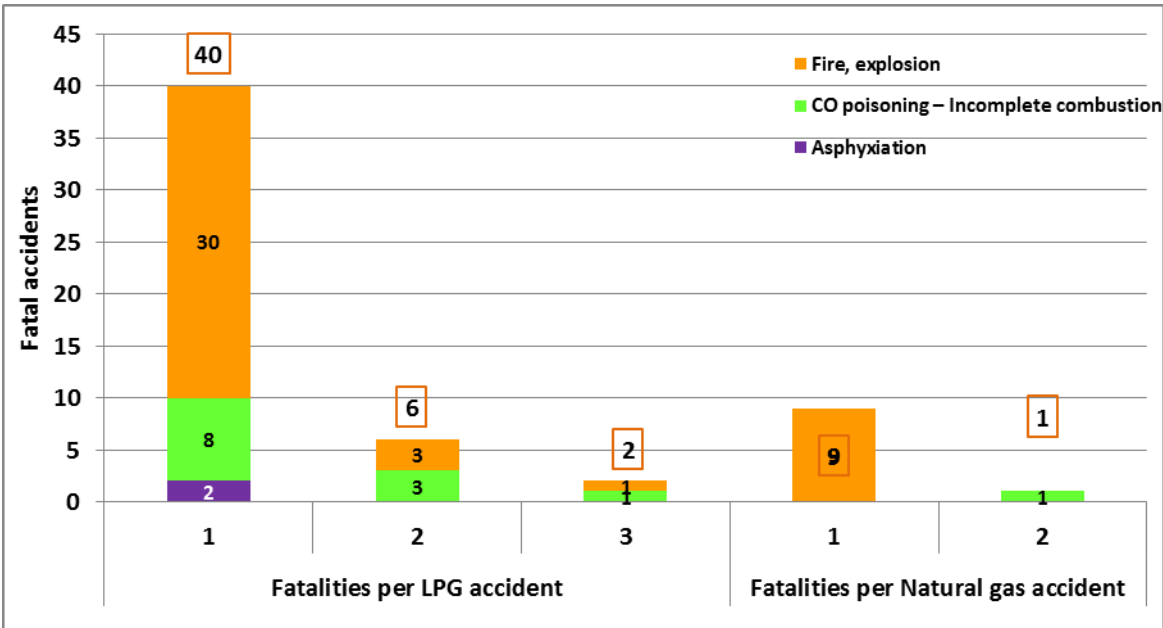
GRAPH 3.3 Australia & New Zealand Gas Fatalities

➤ *By Consequence (fatalities per accident)*



GRAPH 3.4 Australia & New Zealand Gas Fatalities

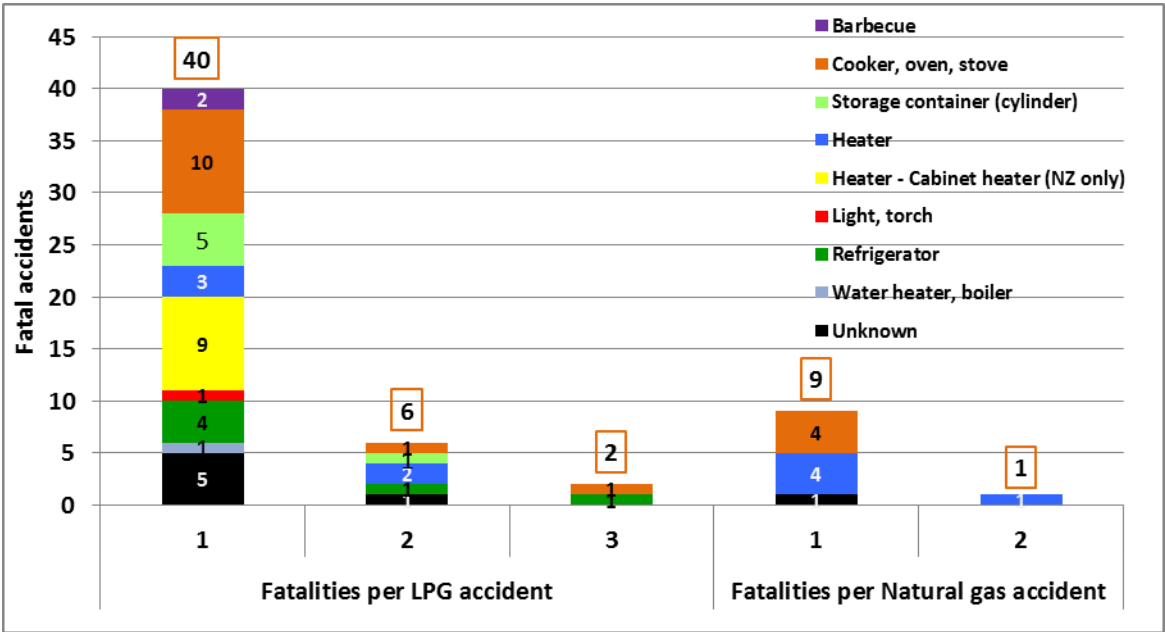
➤ *By Consequence (fatalities per accident) & Accident Type*





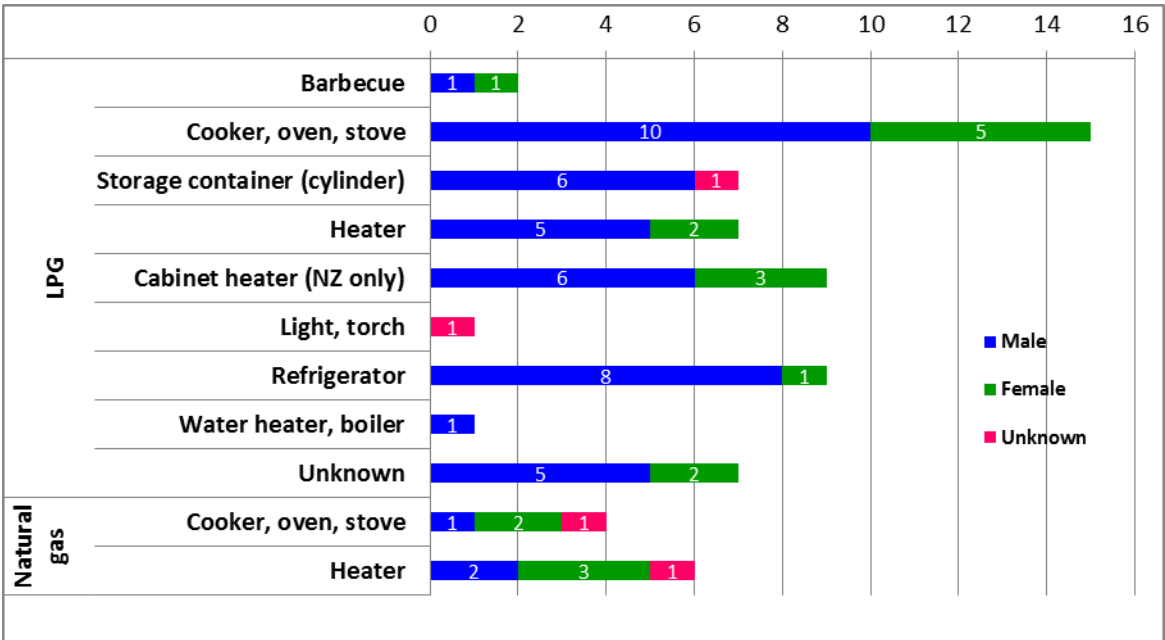
GRAPH 3.5 Australia & New Zealand Gas Fatalities

➤ *By Consequence & Equipment Type*



GRAPH 3.6 Australia & New Zealand Gas Fatalities

➤ *By Equipment Type & Victim's gender*



**GRAPH 3.7 Australia & New Zealand Gas Fatalities**

➤ *By Equipment Type & Victim's age*



## 4. Fatal Accidents Information

**TABLE 4.1 Australia & New Zealand LPG Fatal Accidents**

Year	ACT	NSW	NT	QLD	SA	TAS	VIC	WA	Aust	NZ	Total
2005-2006					1				1	2	3
2006-2007		1		1			2	1	5	0	5
2007-2008				1					1	5	6
2008-2009				1			1		2	2	4
2009-2010								1	1	1	2
2010-2011		2		1			1	2	6	2	8
2011-2012		2		1		1		1	5	1	6
2012-2013		#					1	1	2	2	4
2013-2014		#						1	1		1
2014-2015				1			1		2		2
2015-2016				1			1	1	3	2	5
2016-2017							1	1	2		2
<b>Total</b>	<b>0</b>	<b>5</b>	<b>0</b>	<b>7</b>	<b>1</b>	<b>1</b>	<b>8</b>	<b>9</b>	<b>31</b>	<b>17</b>	<b>48</b>

**TABLE 4.2 Australia & New Zealand LPG Fatalities**

Year	ACT	NSW	NT	QLD	SA	TAS	VIC	WA	Aust	NZ	Total
2005-2006					2				2	2	4
2006-2007		1		1			2	3	7	0	7
2007-2008				1					1	5	6
2008-2009				1			1		2	3	5
2009-2010								1	1	1	2
2010-2011		2		1			1	3	7	2	9
2011-2012		3		1		3		1	8	1	9
2012-2013		#					1	1	2	2	4
2013-2014		#						1	1		1
2014-2015				2			2		4		4
2015-2016	0			1			1	1	3	2	5
2016-2017	0						1	1	2		2
<b>Total</b>	<b>0</b>	<b>6</b>	<b>0</b>	<b>8</b>	<b>2</b>	<b>3</b>	<b>9</b>	<b>12</b>	<b>40</b>	<b>18</b>	<b>58</b>

Note: # No data supplied or too late to include in this round of report.

**TABLE 4.3 Australia & New Zealand NG Fatal Accidents**

Year	ACT	NSW	NT	QLD	SA	TAS	VIC	WA	Aust	NZ	Total
2005-2006	1						1		2		2
2006-2007									0		0
2007-2008							1		1	1	2
2008-2009					1		1		2		2
2009-2010							2		2		2
2010-2011									0		0
2011-2012								1	1		1
2012-2013		#							0		0
2013-2014		#							0		0
2014-2015									0		0
2015-2016							1		1		1
2016-2017									0		0
<b>Total</b>	<b>1</b>	<b>0</b>	<b>0</b>	<b>0</b>	<b>1</b>	<b>0</b>	<b>6</b>	<b>1</b>	<b>9</b>	<b>1</b>	<b>10</b>

**TABLE 4.4 Australia & New Zealand NG Fatalities**

Year	ACT	NSW	NT	QLD	SA	TAS	VIC	WA	Aust	NZ	Total
2005-2006	1						1		2		2
2006-2007									0		0
2007-2008							1		1	1	2
2008-2009					1		1		2		2
2009-2010							3		3		3
2010-2011									0		0
2011-2012								1	1		1
2012-2013		#							0		0
2013-2014		#							0		0
2014-2015									0		0
2015-2016							1		1		1
2016-2017									0		0
<b>Total</b>	<b>1</b>	<b>0</b>	<b>0</b>	<b>0</b>	<b>1</b>	<b>0</b>	<b>7</b>	<b>1</b>	<b>10</b>	<b>1</b>	<b>11</b>

Note: # No data supplied or too late to include in this round of report.