

Fatal Gas Accident Data Report

**Australia & New Zealand Financial Years
2005 – 2021**

This report covers:

- Definitions & classifications
- Summary of 2020-2021 year
- Series of graphs & tables for data supplied covering the period 1 July 2005 to 30 June 2021
 1. LPG fatal accidents
 2. Natural Gas (NG) fatal accidents
 3. Gas fatalities
 4. Tables - Fatal accidents information

Definitions and classifications

Fatal gas accident

Any fatal event that results from gas (fuel gas or combustion) poisoning or suffocation, burn or injury by direct involvement of gas and gas equipment except if linked to the initial event of a natural disaster, criminal activity, suicide or self-harm.

Accident type

CO poisoning – Unburned fuel gas
CO poisoning – Incomplete combustion
Unexpected and complete failure
Fire, explosion
Gas inhalation – Unburned fuel gas
Gas leak, escape
Excavation (third party hit)
Overheating
Other

Equipment site (environment)

Domestic
Commercial
Industrial
Vehicle
Marine craft
Recreation site
Other

Equipment type

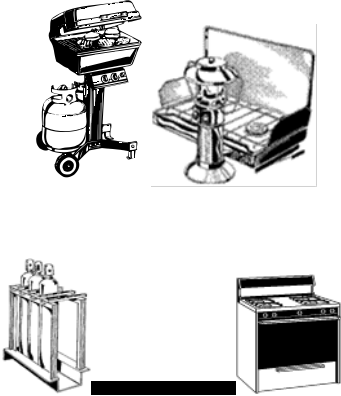
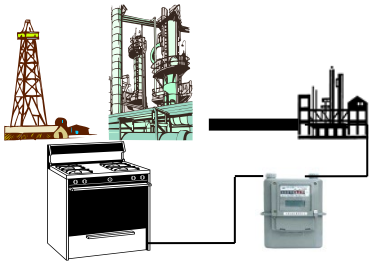
Barbecue
Compressor
Container (cylinder)
Cooker, oven
Dispenser
Fuel cell
Heater - Cabinet heater (NZ only)
Heater - External unflued (patio heater)
Heater – Pool
Heater - Open flued
Heater - Balanced flue
Heater - Power flued
Heater - Unflued but not cabinet heater
Heater - Ducted
Installation pipework
Laundry dryer
Light, torch

Mains, services & regulator stations
Refrigerator
Storage vessel
Vaporiser
Water heater – Storage
Water heater – Instantaneous
Water heater – Boiler Water heater – Other
Water heater – Other
Decorative log effect appliances
Commercial catering equipment
Type B (eg stationary engines, kilns, furnaces)
Other

Summary of 2020-21

Gas accidents

This page covers the 12-month period from 1 July 2020 to 30 June 2021. It is based on details of incidents reported to gas safety regulators in Australia and New Zealand.

	<p style="text-align: center;">LPG (2020-21 only)</p> <ul style="list-style-type: none">• A CO Poisoning from outdoor LPG refrigerator used in shipping container• Suffered severe burns and late died from a fire that an inadvertently cut the flexible assembly hose connected to the room heater during renovations.
	<p style="text-align: center;">Natural gas (NG) (2020-21 only)</p> <ul style="list-style-type: none">• None

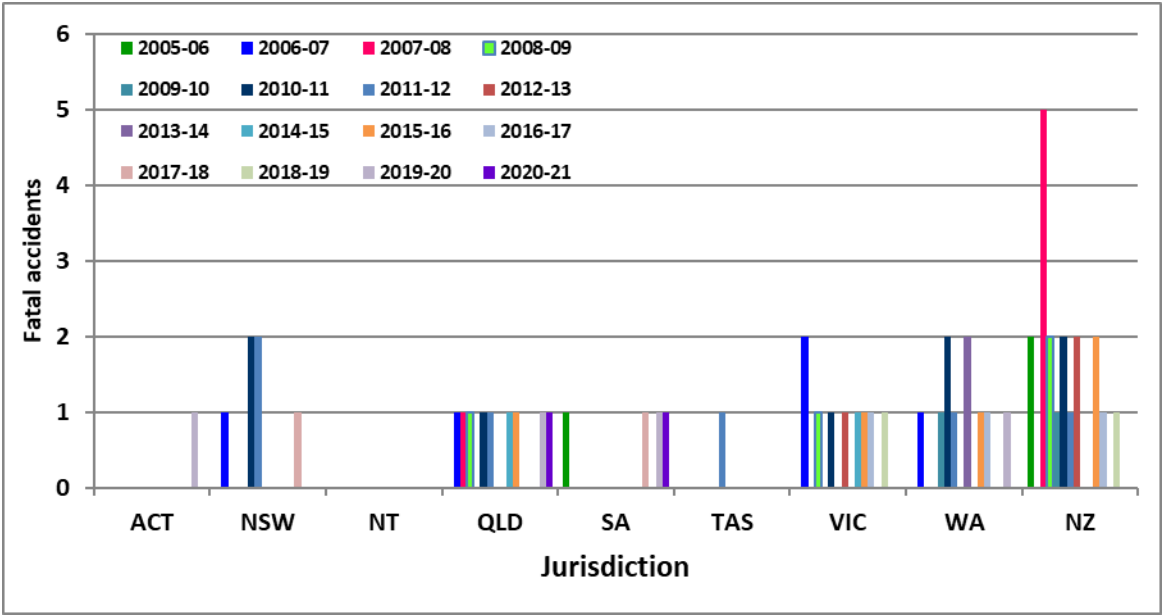
This report presents the information in a series of charts and tables.

The following sections present data supplied in a series of charts and tables for years 2005-2021.

1- LPG Fatal accidents

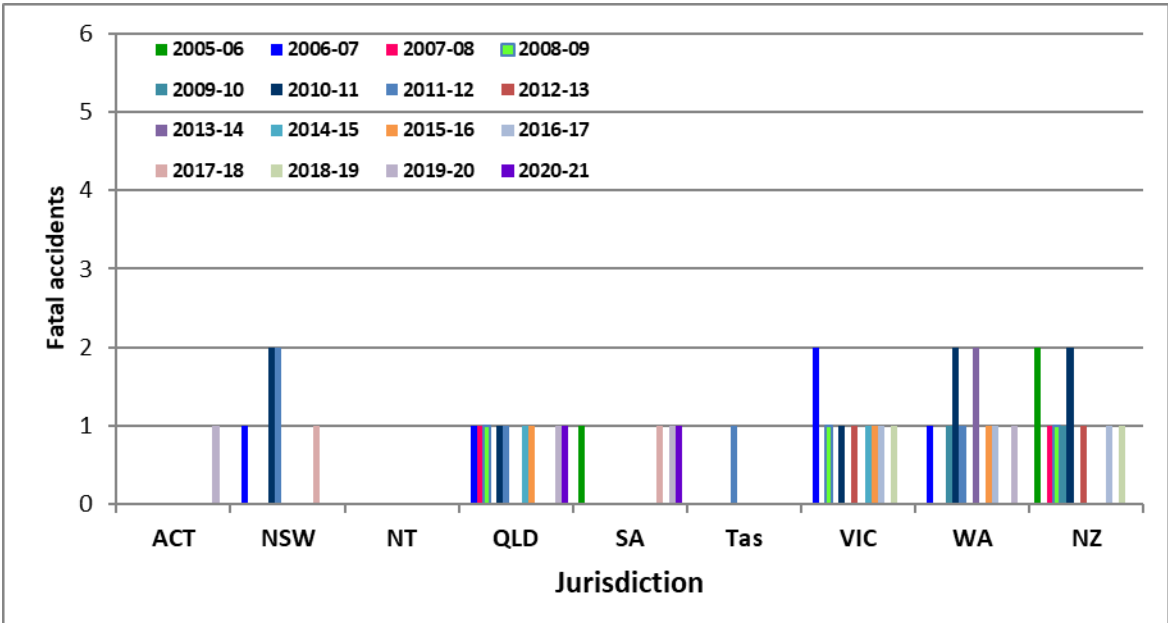
GRAPH 1.1a Australia & New Zealand (NZ) LPG fatal accidents
(Inclusive of NZ cabinet heater appliances)

➤ *By state/country*



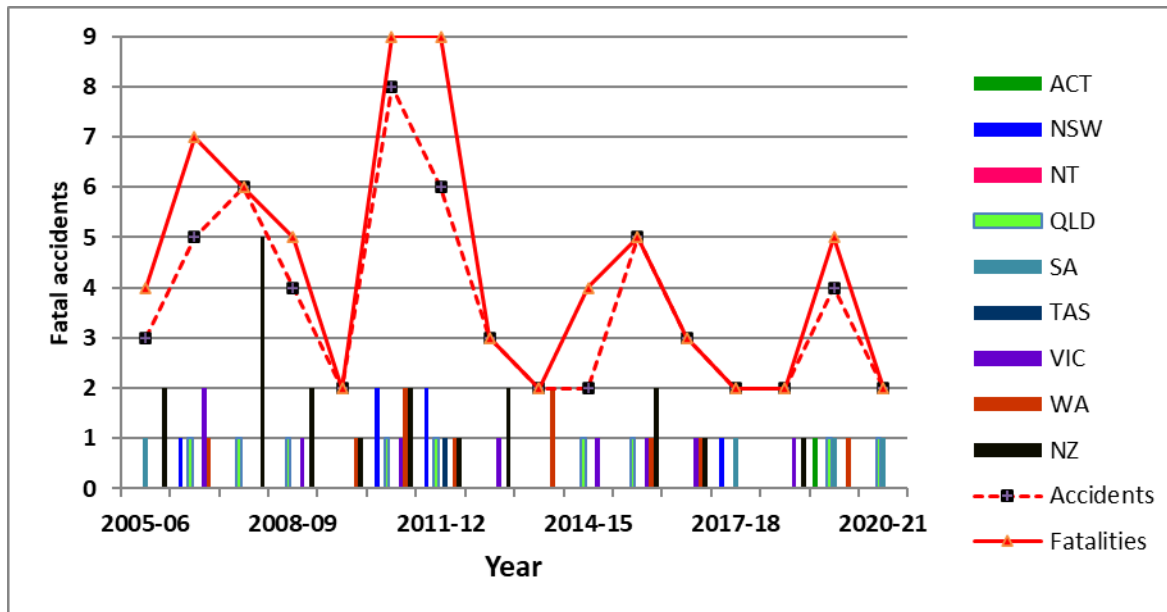
GRAPH 1.1b Australia & New Zealand LPG fatal accidents
(Exclusive of NZ cabinet heater appliances)

➤ *By state/country*



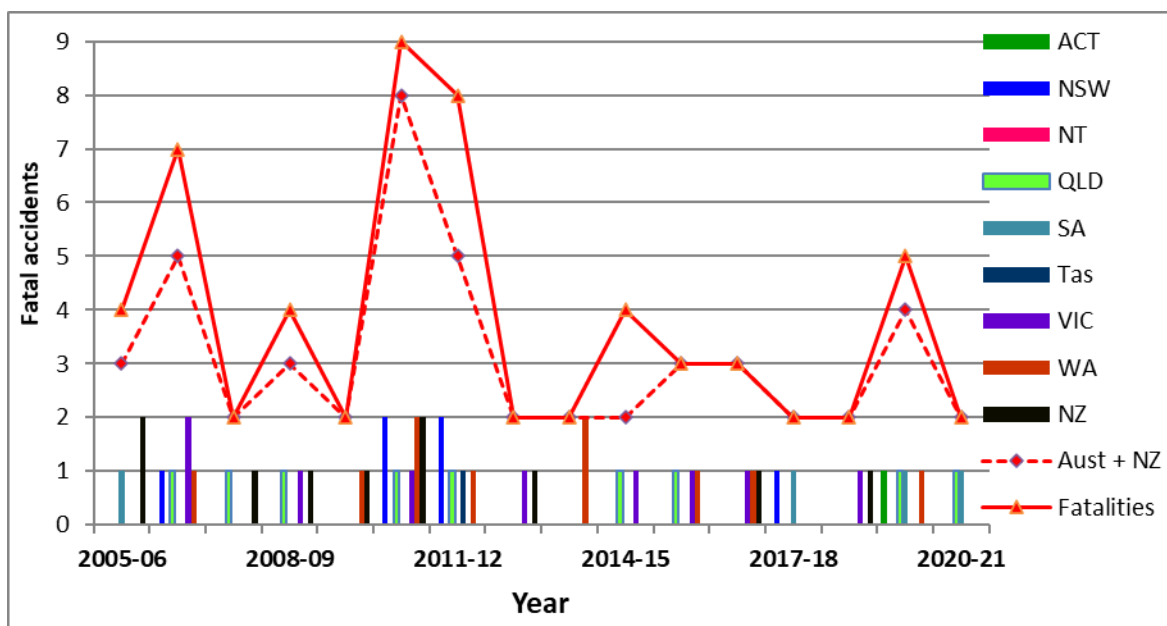
GRAPH 1.2a Australia & New Zealand LPG fatal accidents
(Inclusive of NZ cabinet heater appliances)

➤ **By year**



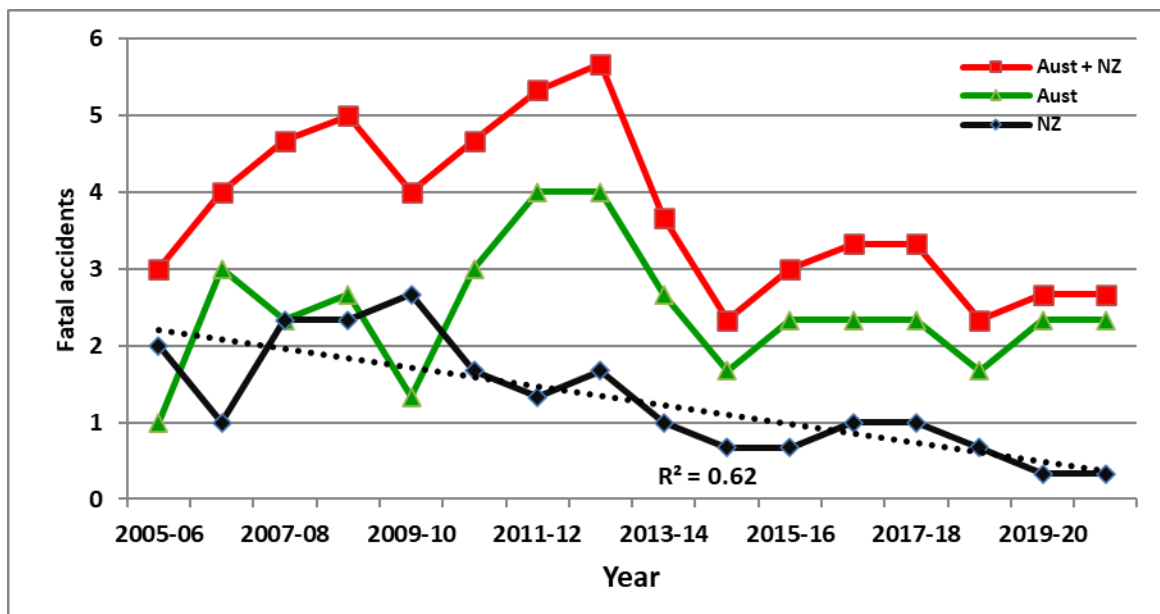
GRAPH 1.2b Australia & New Zealand LPG fatal accidents
(Exclusive of NZ cabinet heater appliances)

➤ **By year**



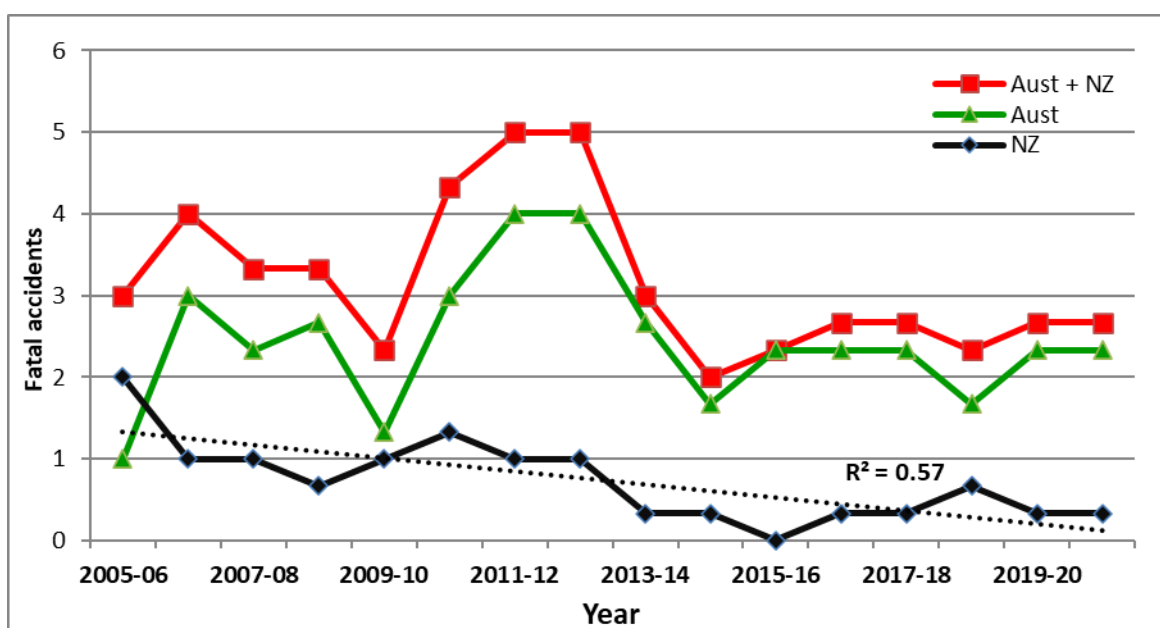
GRAPH 1.3a Australia & New Zealand LPG fatal accidents
(Inclusive of NZ cabinet heater appliances)

➤ *By country (three-year running average)*



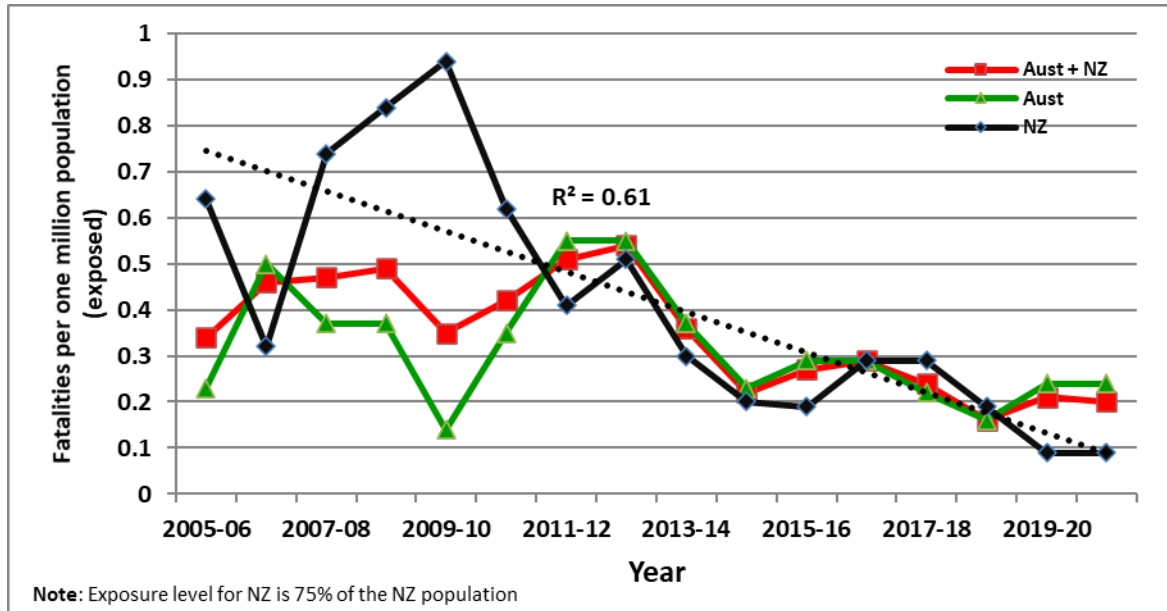
GRAPH 1.3b Australia & New Zealand fatal accidents
(Exclusive of NZ cabinet heater appliances)

➤ *By country (three-year running average)*



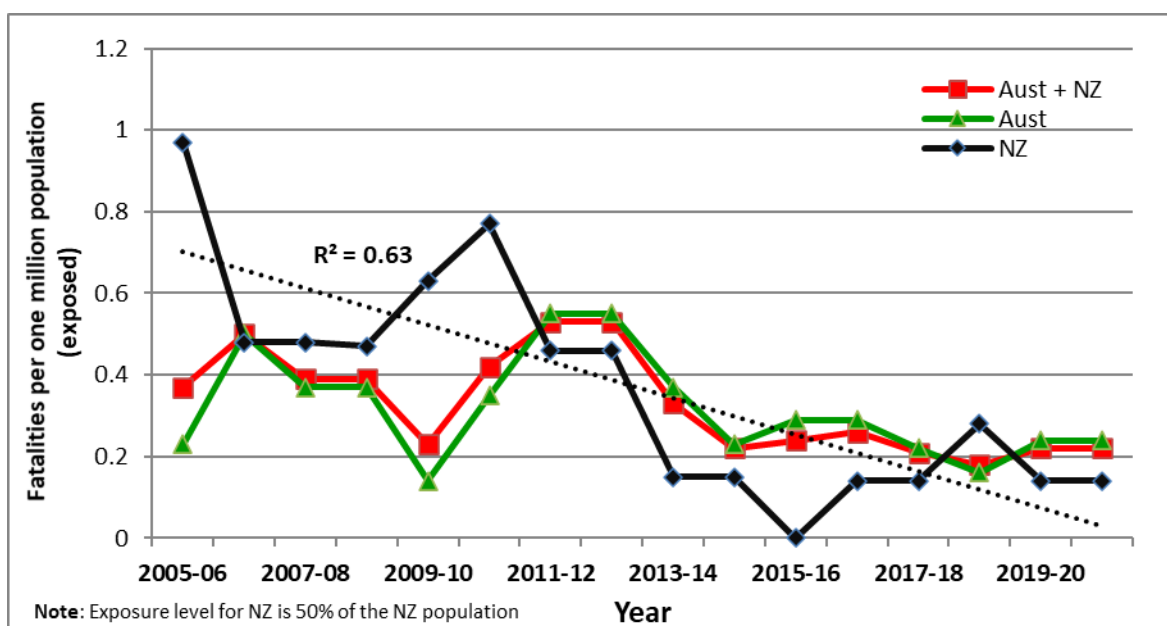
GRAPH 1.4a Australia & New Zealand LPG fatality trend
(Inclusive of NZ cabinet heater appliances)

- *By country (three-year running average fatality per million population exposed in Australia and New Zealand)*



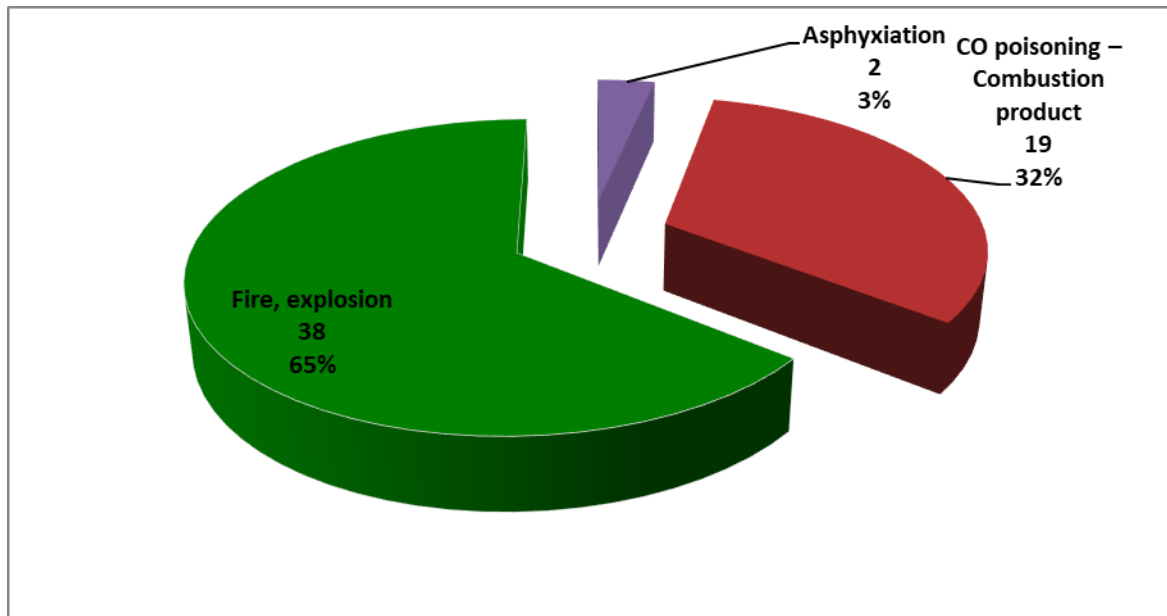
GRAPH 1.4b Australia & New Zealand fatality trend
(Exclusive of NZ cabinet heater appliances)

- *By country (three-year running average fatality per million population exposed in Australia and New Zealand)*



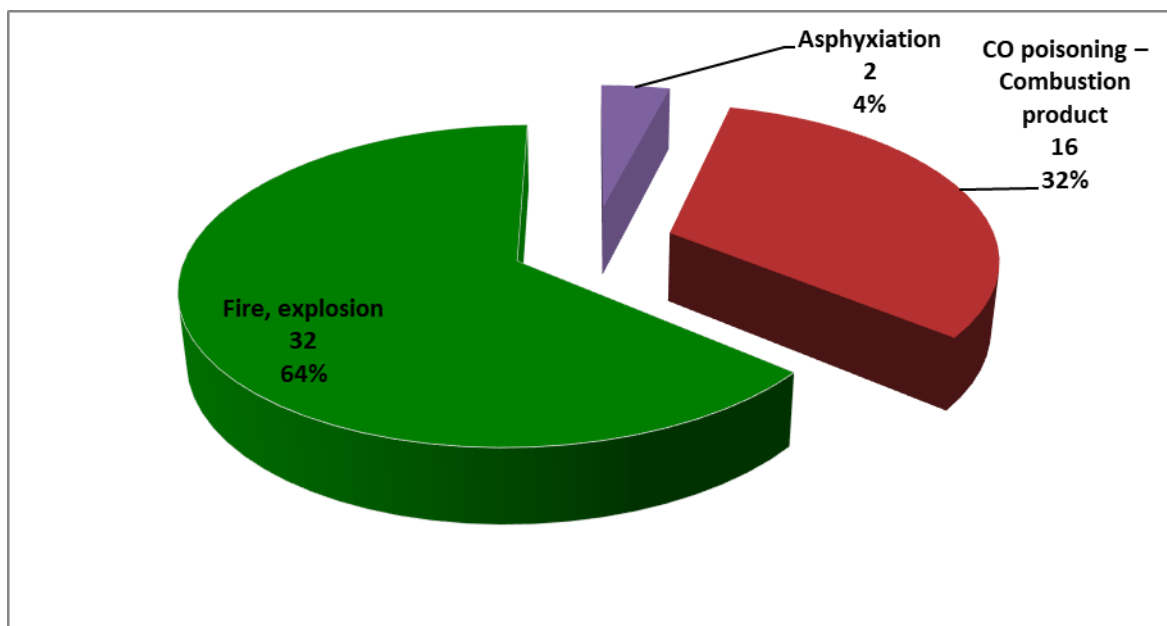
GRAPH 1.5a Australia & New Zealand LPG fatal accidents
(Inclusive of NZ cabinet heater appliances)

➤ **By accident type**



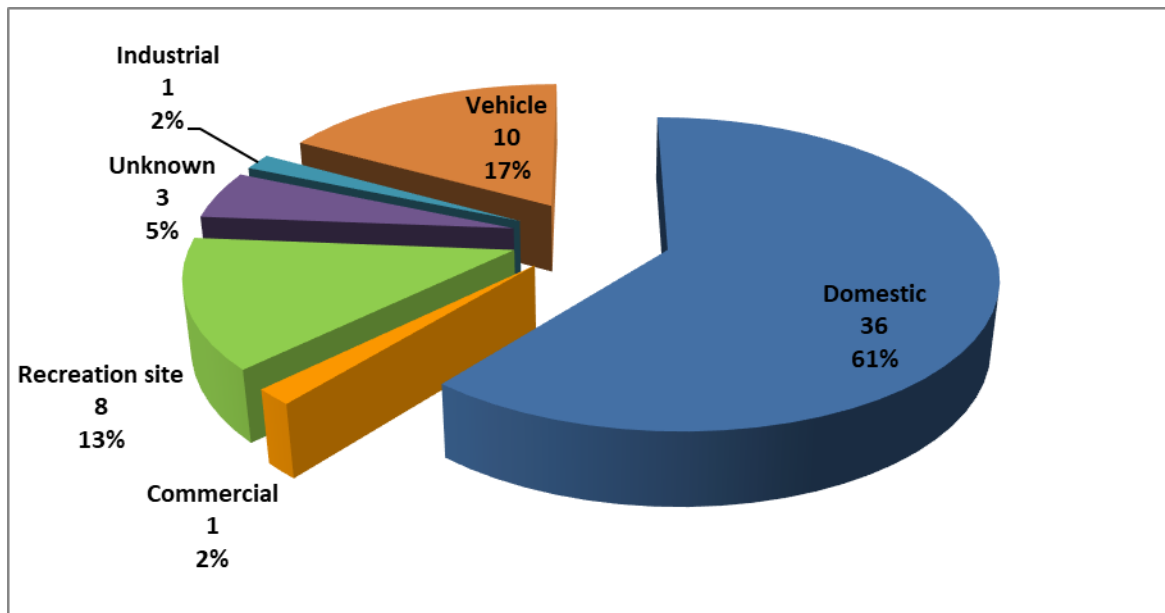
GRAPH 1.5b Australia & New Zealand LPG fatal accidents
(Exclusive of NZ cabinet heater appliances)

➤ **By accident type**



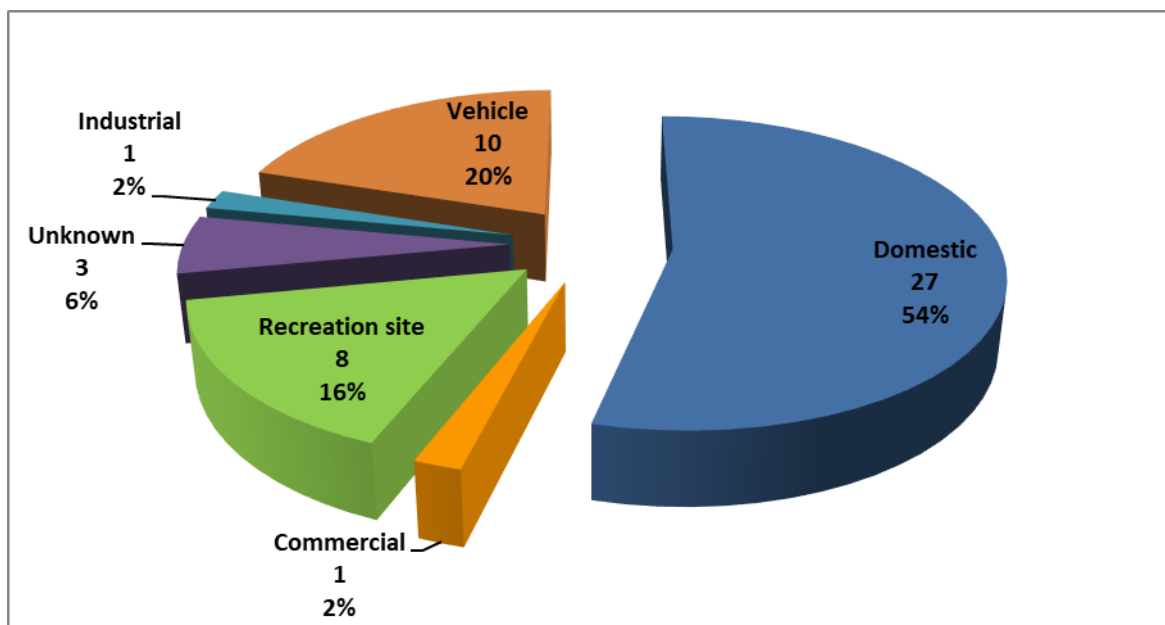
GRAPH 1.6a Australia & New Zealand LPG fatal accidents
(Inclusive of NZ cabinet heater appliances)

➤ *By equipment site (environment)*



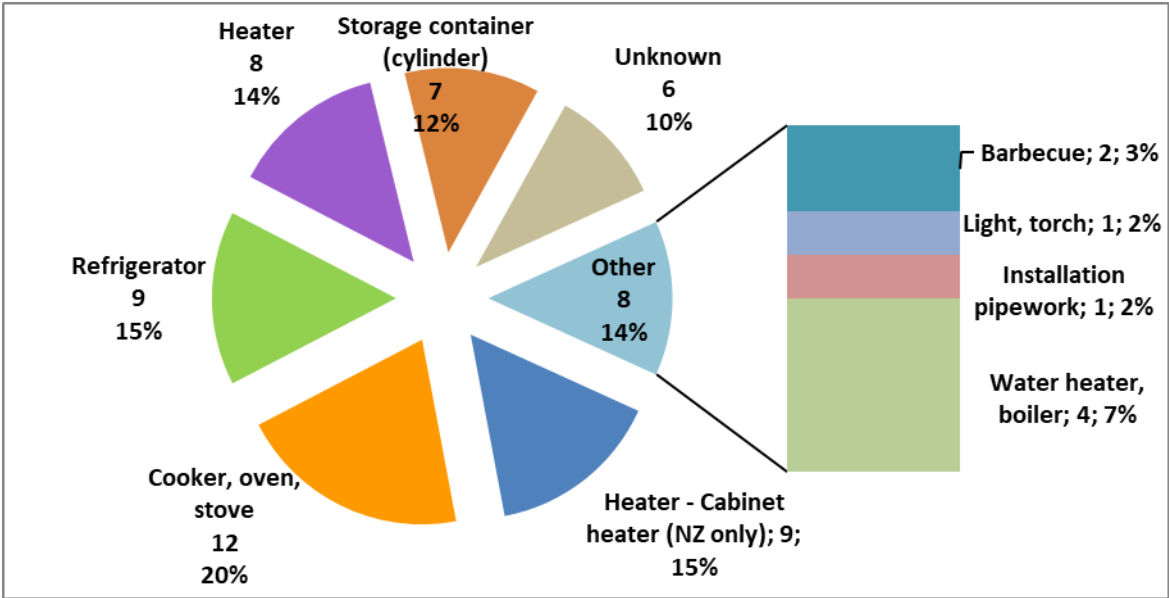
GRAPH 1.6b Australia & New Zealand LPG fatal accidents
(Exclusive of NZ cabinet heater appliances)

➤ *By equipment site (environment)*



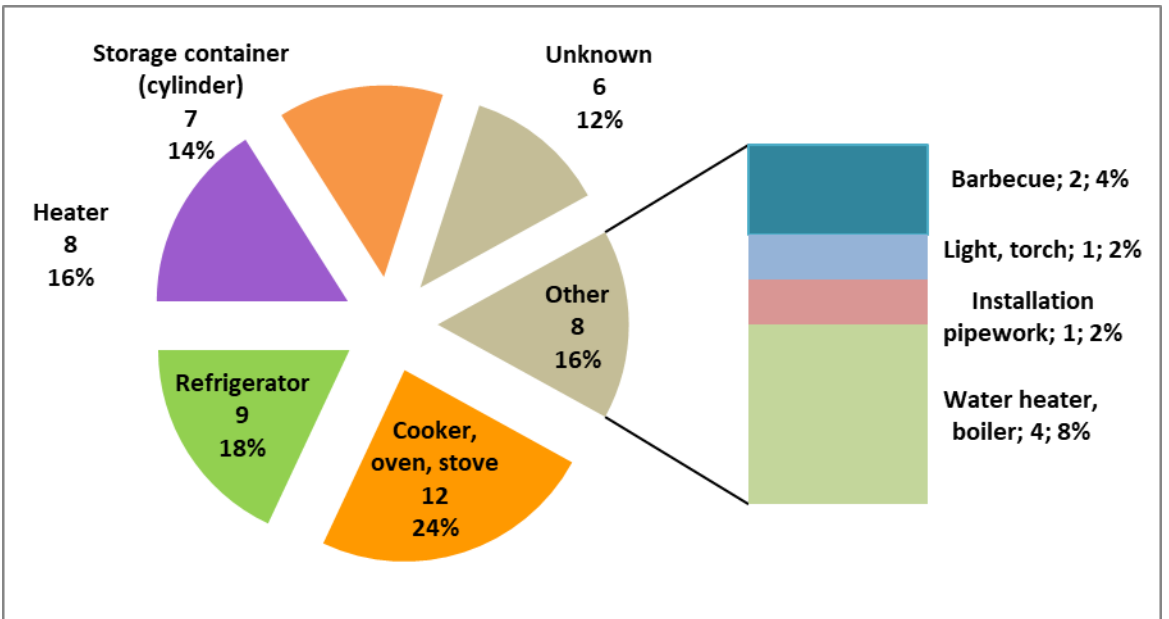
GRAPH 1.7a Australia & New Zealand LPG fatal accidents
(Inclusive of NZ cabinet heater appliances)

➤ **By equipment**



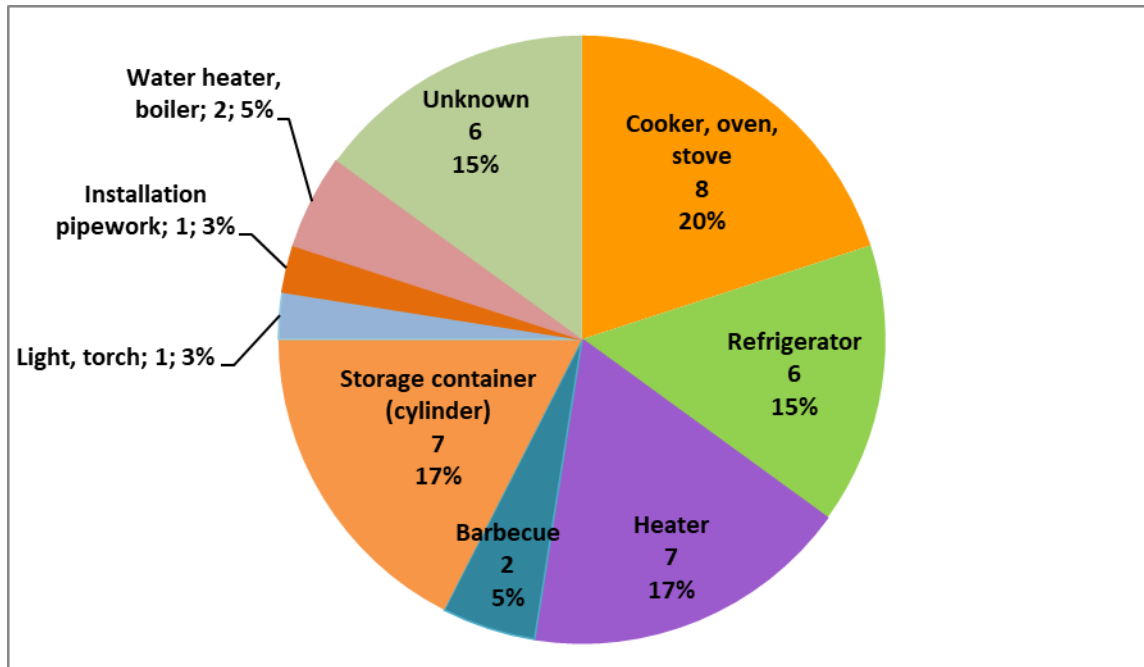
GRAPH 1.7b Australia & New Zealand LPG fatal accidents
(Exclusive of NZ cabinet heater appliances)

➤ **By equipment**



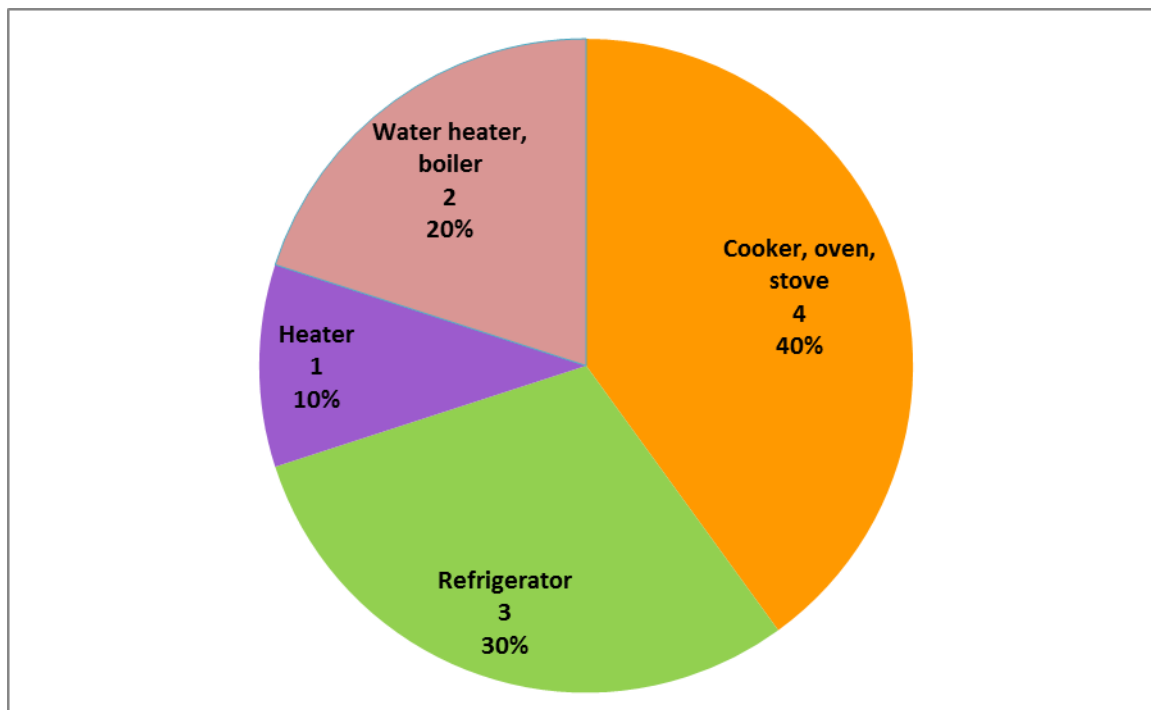
GRAPH 1.7b (i) Australia & New Zealand LPG fatal accidents
Australia

➤ ***By equipment***



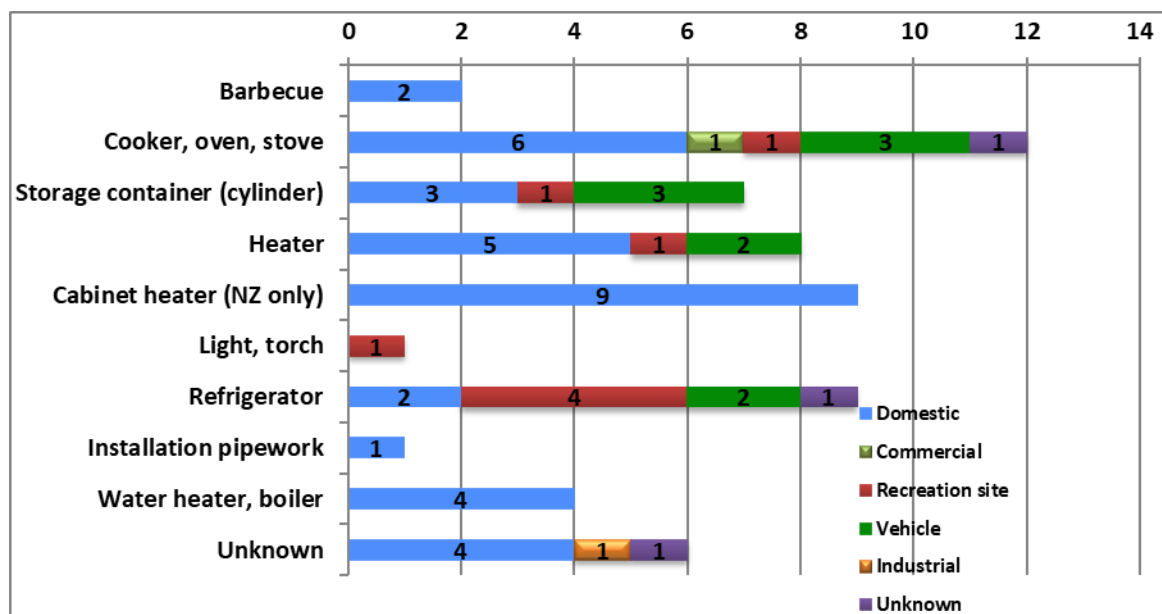
GRAPH 1.7b (ii) Australia & New Zealand LPG fatal accidents
New Zealand (*Exclusive of cabinet heater appliances*)

➤ ***By equipment***



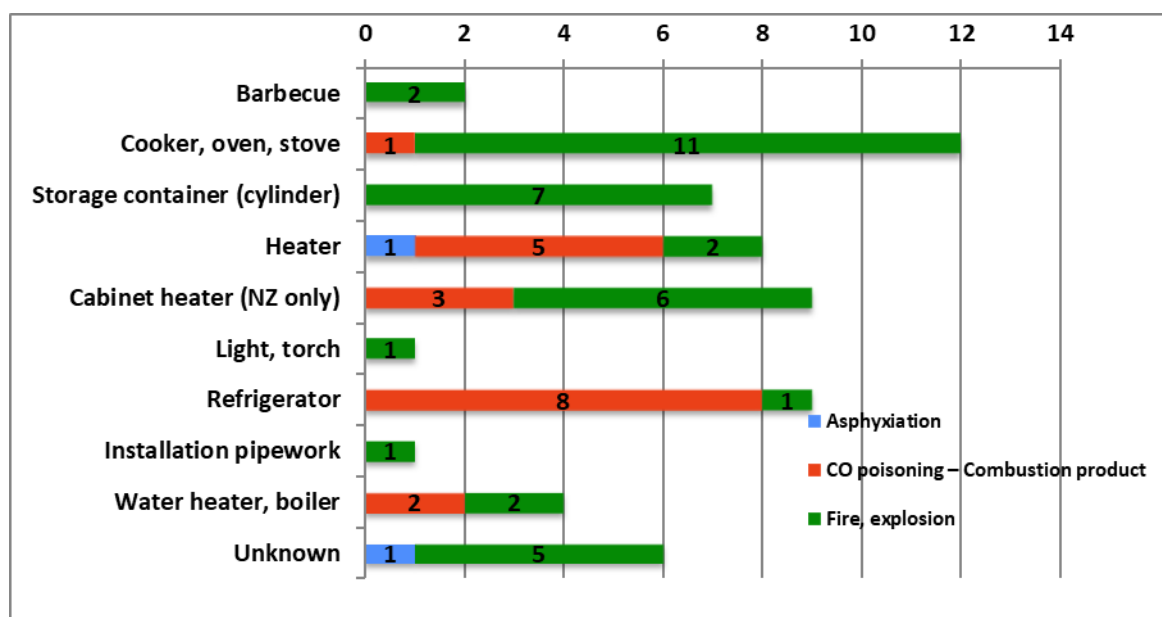
GRAPH 1.8 Australia & New Zealand LPG fatal accidents

➤ *By equipment & its site (environment)*



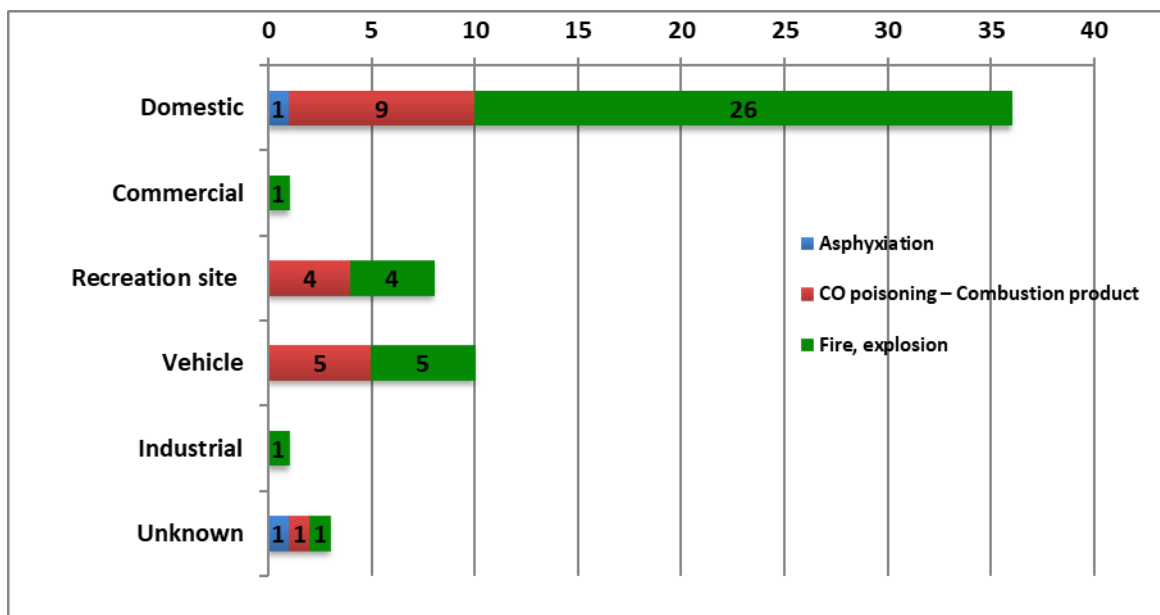
GRAPH 1.9 Australia & New Zealand LPG fatal accidents

➤ *By equipment & accident type*



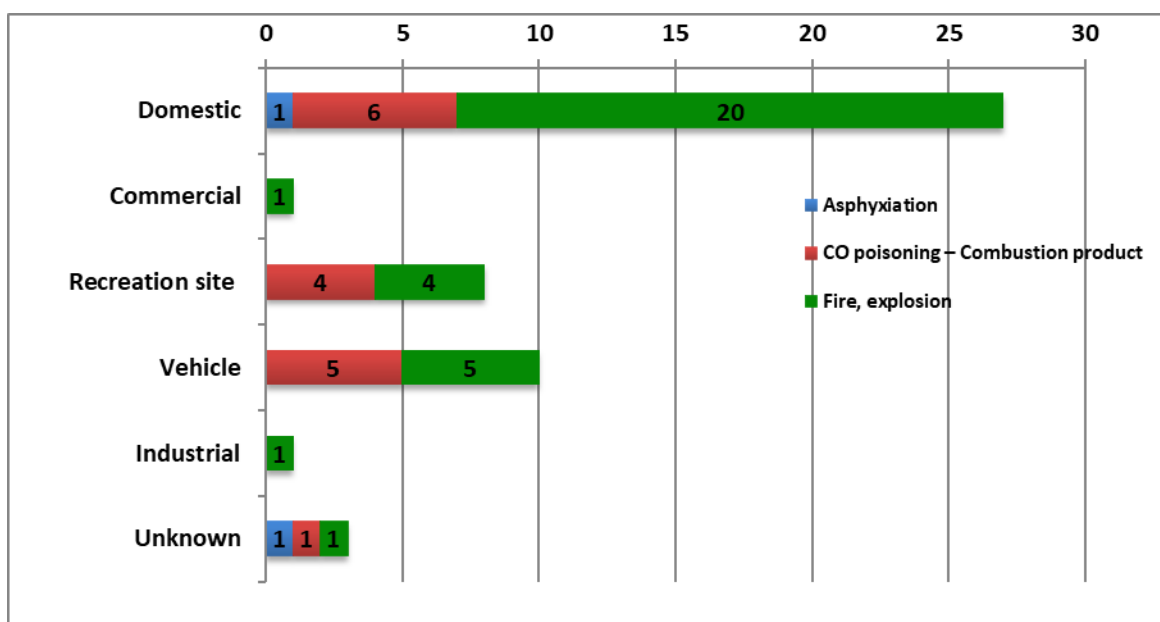
GRAPH 1.10a Australia & New Zealand LPG fatal accidents
(Inclusive of NZ cabinet heater appliances)

➤ **By equipment site (environment) & accident type**



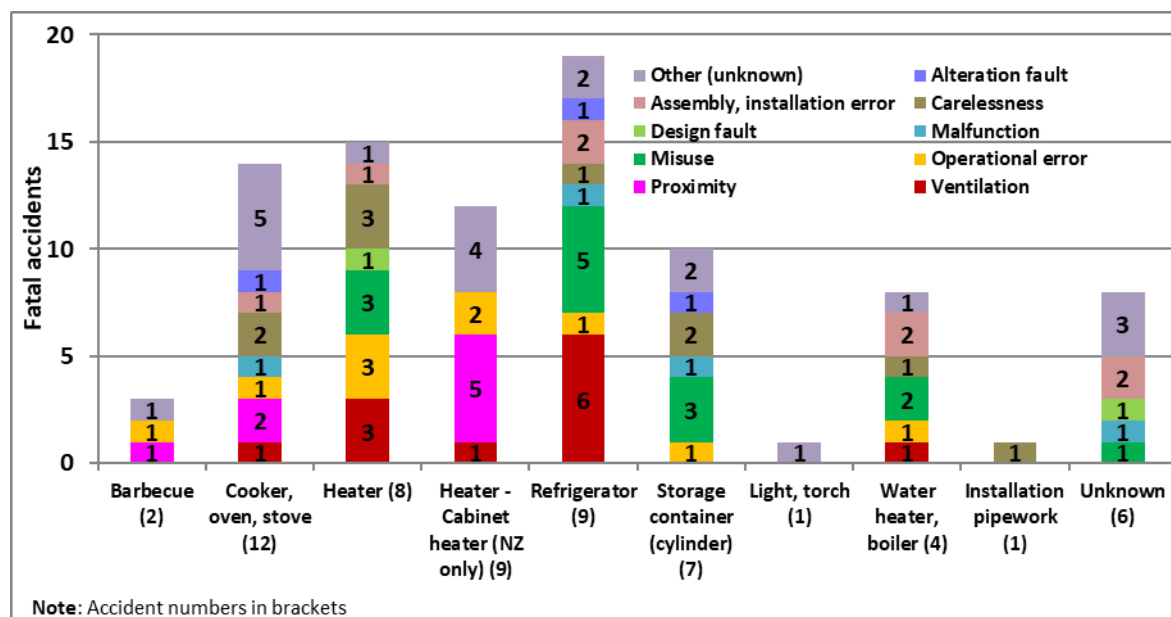
GRAPH 1.10b Australia & New Zealand LPG fatal accidents
(Exclusive of NZ cabinet heater appliances)

➤ **By equipment site (environment) & accident type**



GRAPH 1.11 Australia & New Zealand LPG fatal accidents

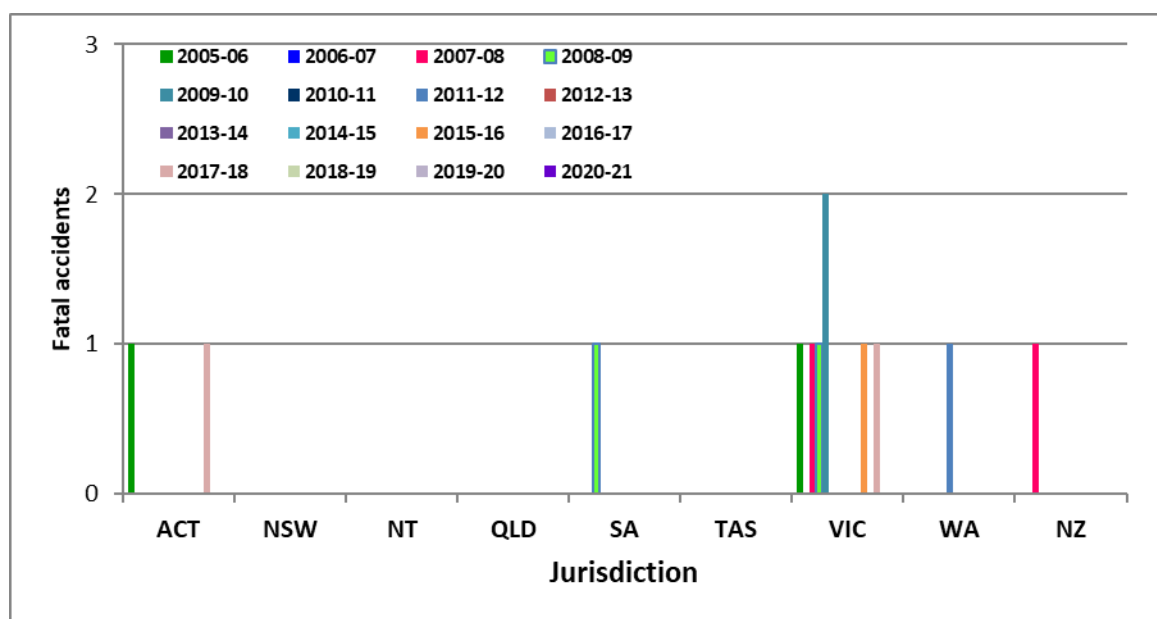
➤ *By equipment & causal factor*



2- Natural Gas (NG) fatal accidents

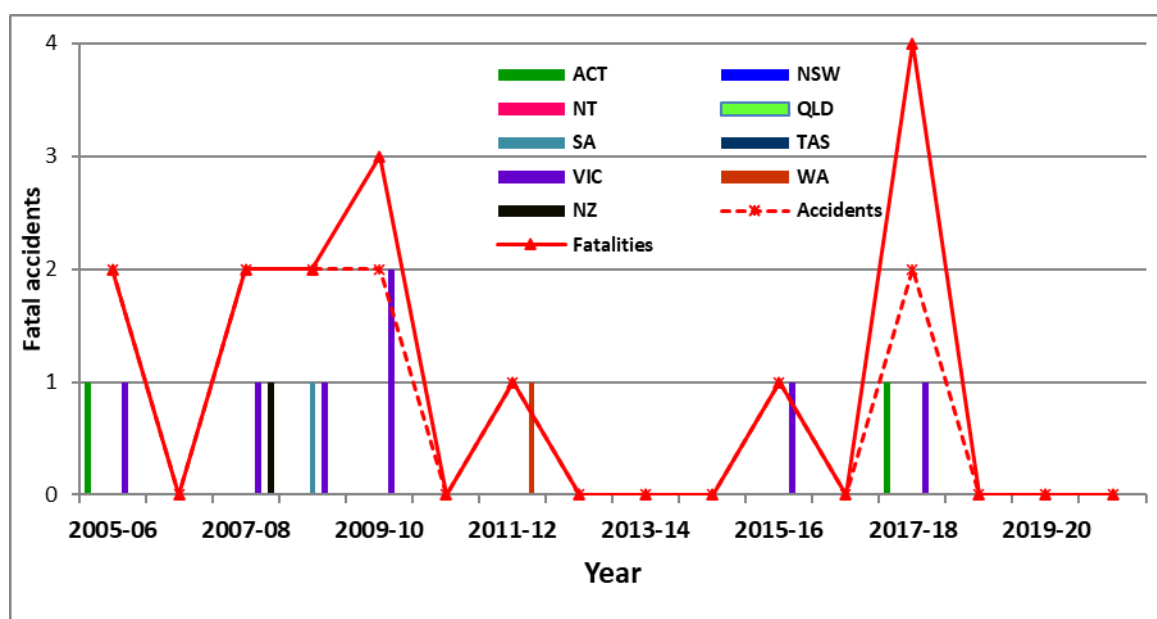
GRAPH 2.1 Australia & New Zealand NG fatal accidents

➤ *By state/country*



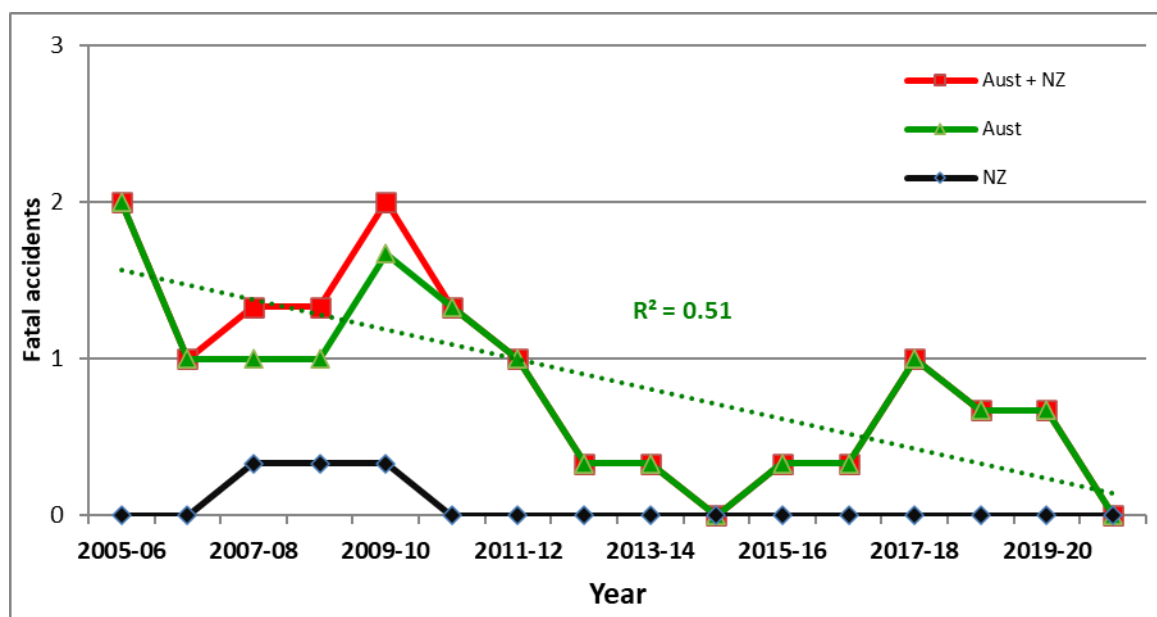
GRAPH 2.2 Australia & New Zealand NG fatal accidents

➤ *By year*



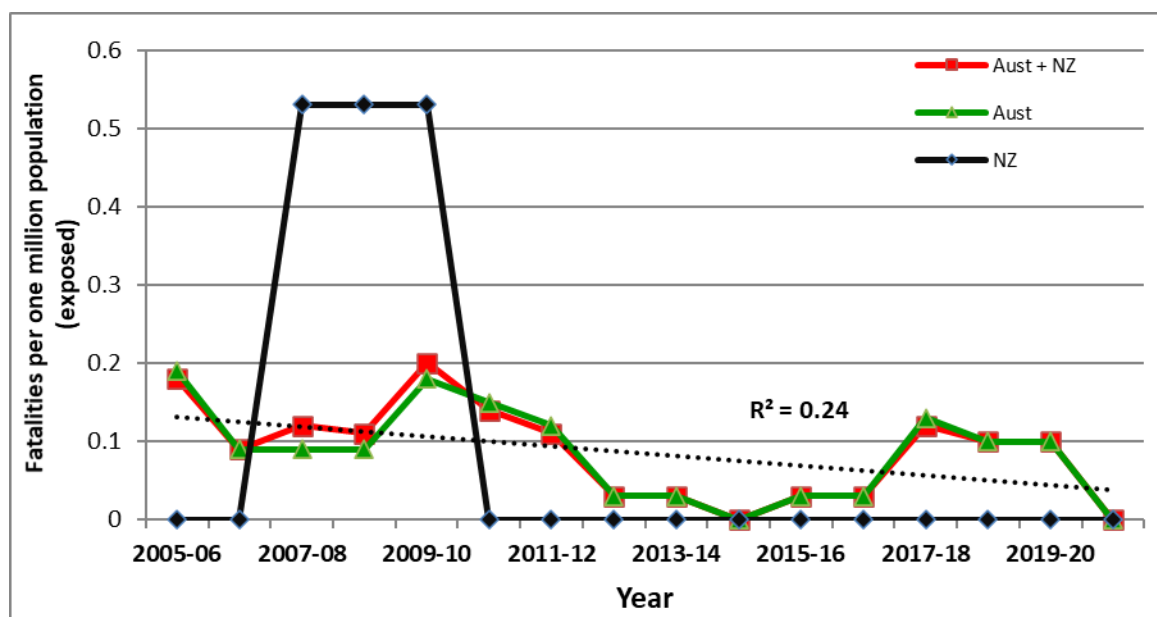
GRAPH 2.3 Australia & New Zealand NG fatal accidents

➤ *By country (three-year running average)*



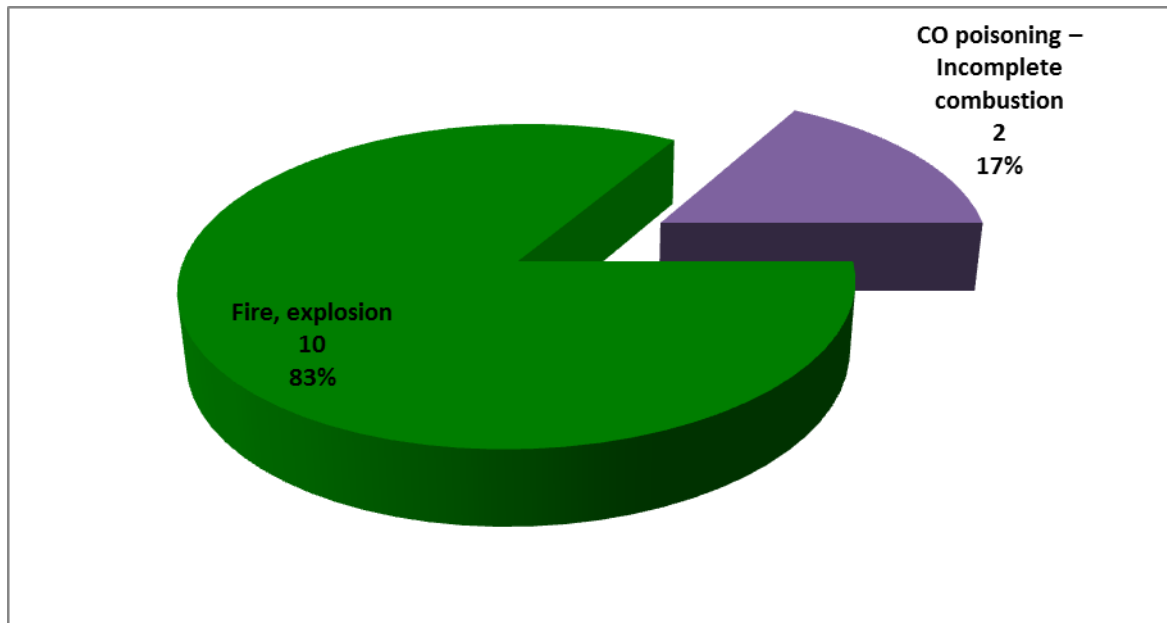
GRAPH 2.4 Australia & New Zealand NG fatality trend

➤ *By country (three-year running average fatality per million population exposed in Australia and New Zealand)*



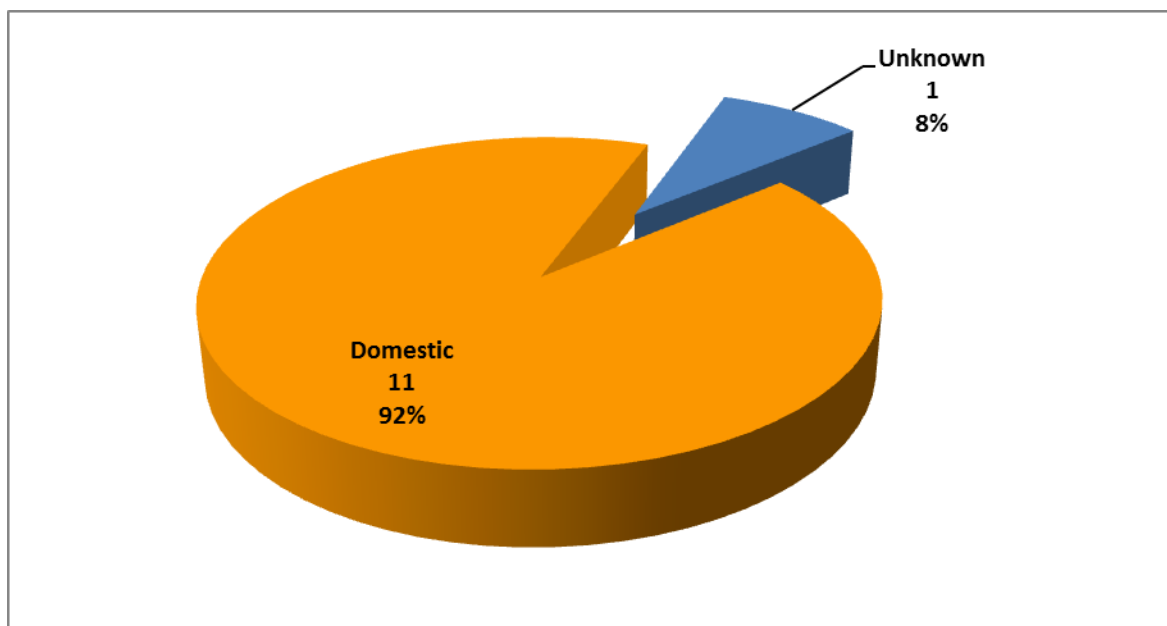
GRAPH 2.5 Australia & New Zealand NG fatal accidents

➤ ***By accident type***



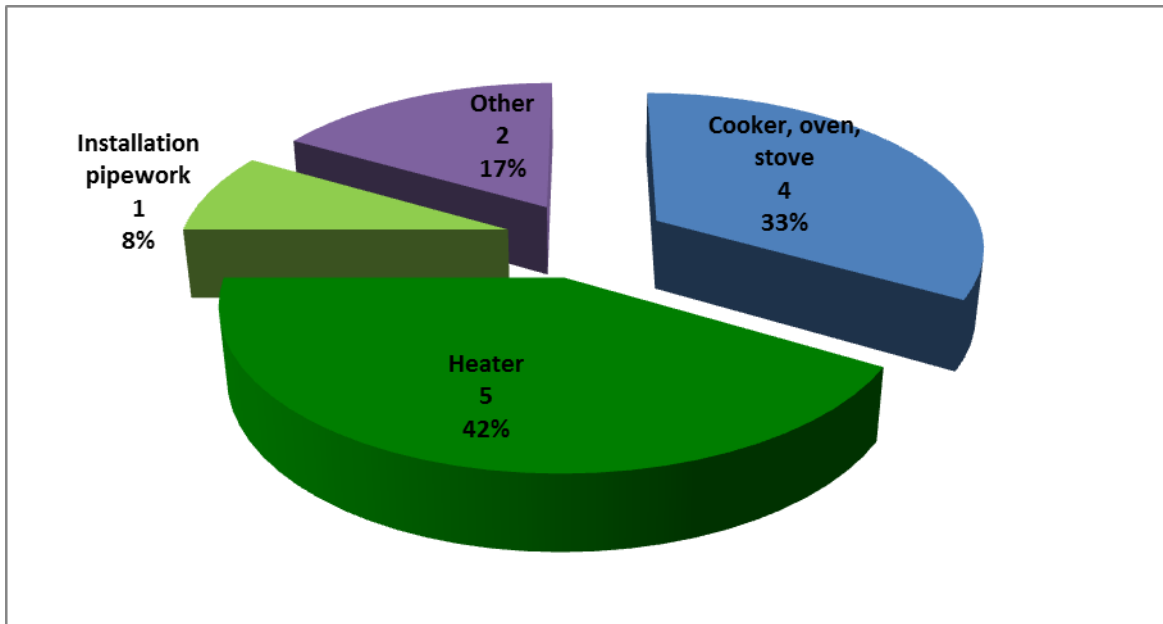
GRAPH 2.6 Australia & New Zealand NG fatal accidents

➤ ***By equipment site (environment)***



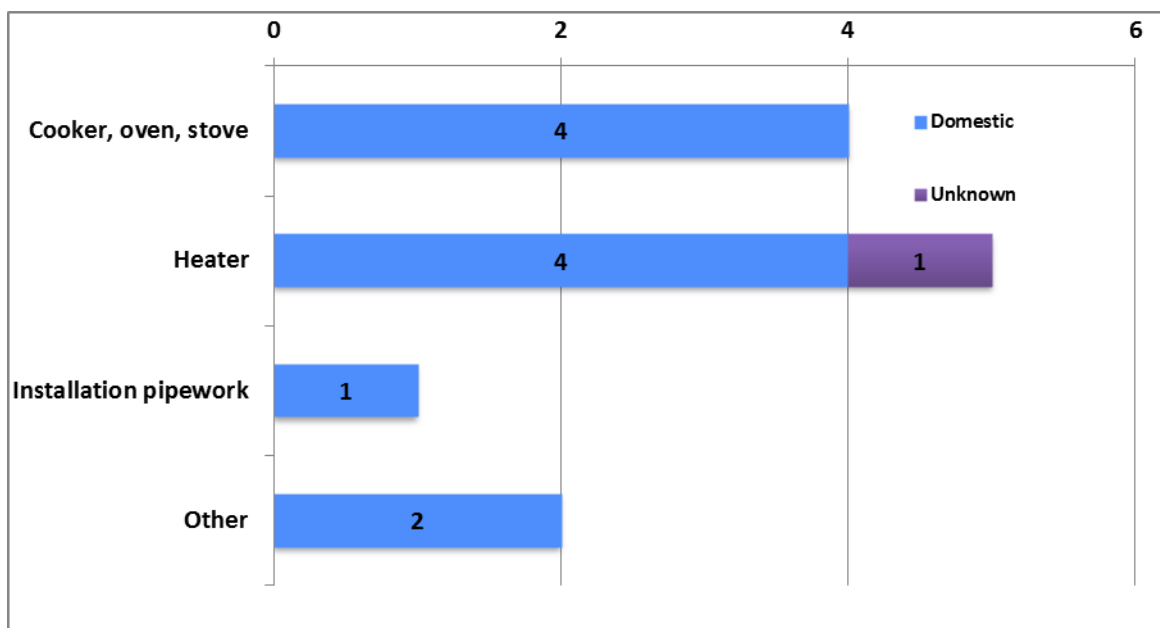
GRAPH 2.7 Australia & New Zealand NG fatal accidents

➤ *By equipment*



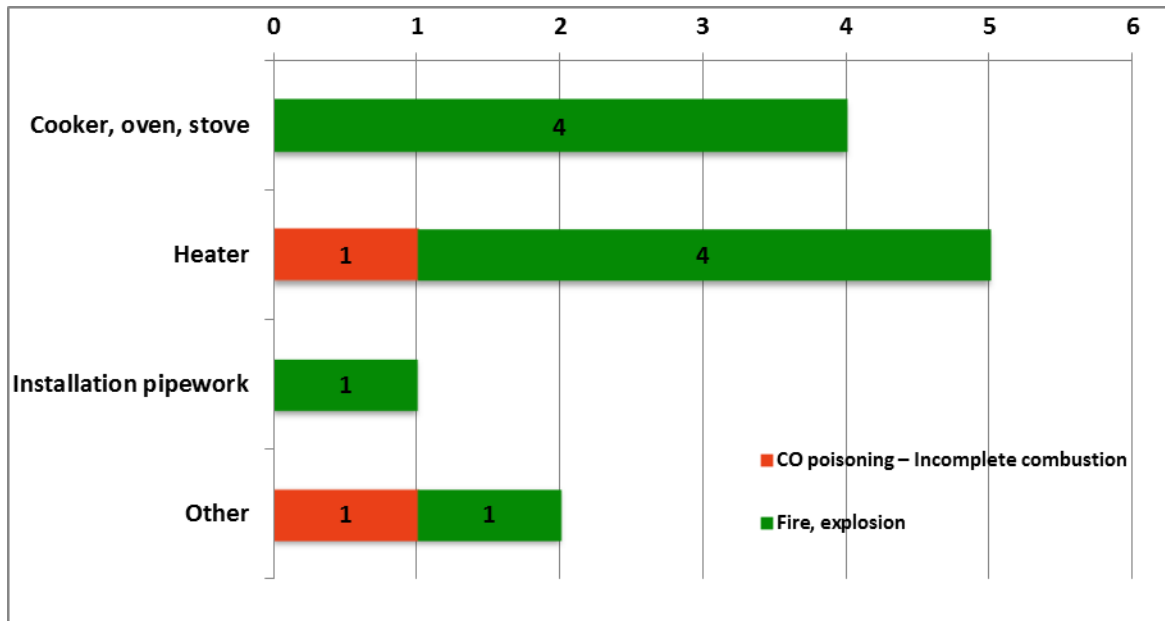
GRAPH 2.8 Australia & New Zealand NG fatal accidents

➤ *By equipment & its site (environment)*



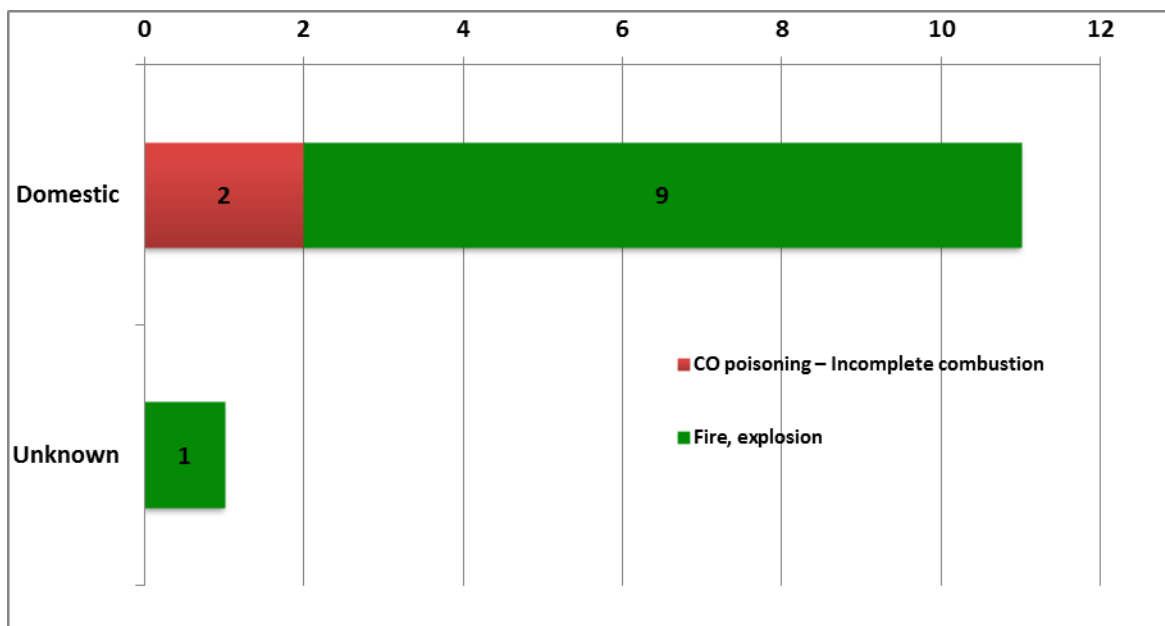
GRAPH 2.9 Australia & New Zealand NG fatal accidents

➤ ***By equipment & accident type***



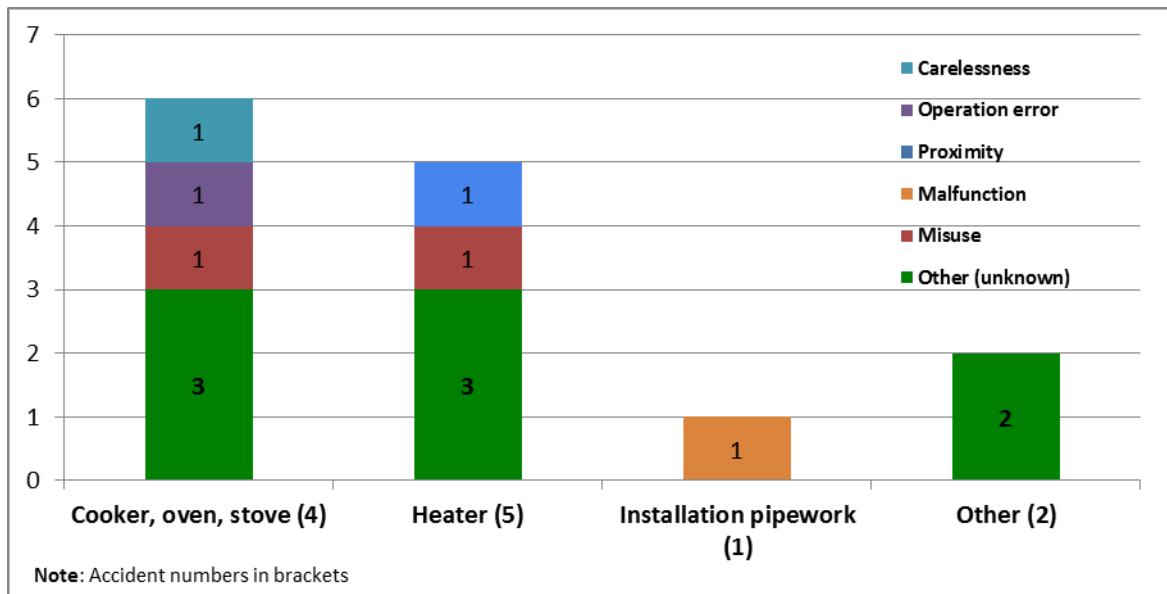
GRAPH 2.10 Australia & New Zealand NG fatal accidents

➤ ***By equipment site (environment) & accident type***



GRAPH 2.11 Australia & New Zealand NG fatal accidents

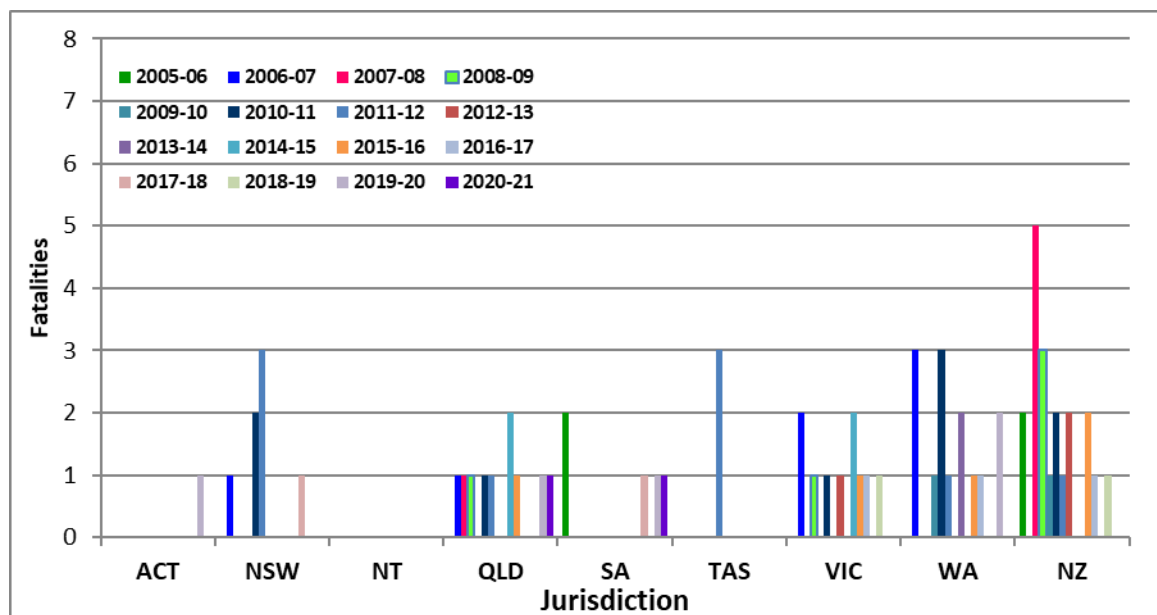
➤ ***By equipment & causal factor***



3- Gas fatalities

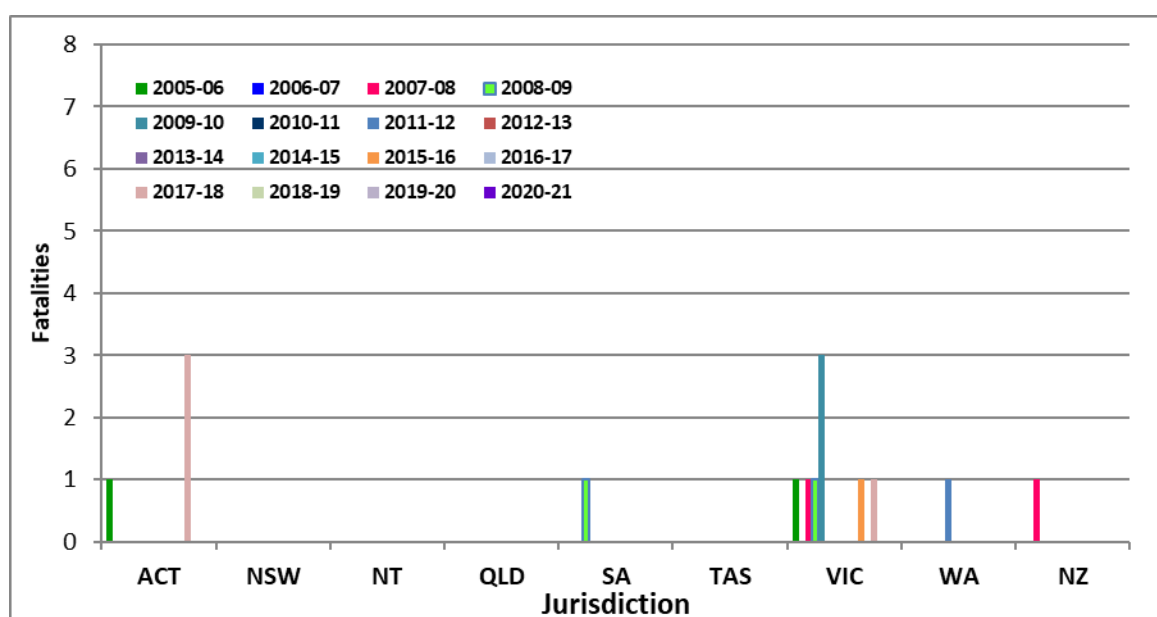
**GRAPH 3.1a Australia & New Zealand gas fatalities
(LPG)**

➤ *By state/country*



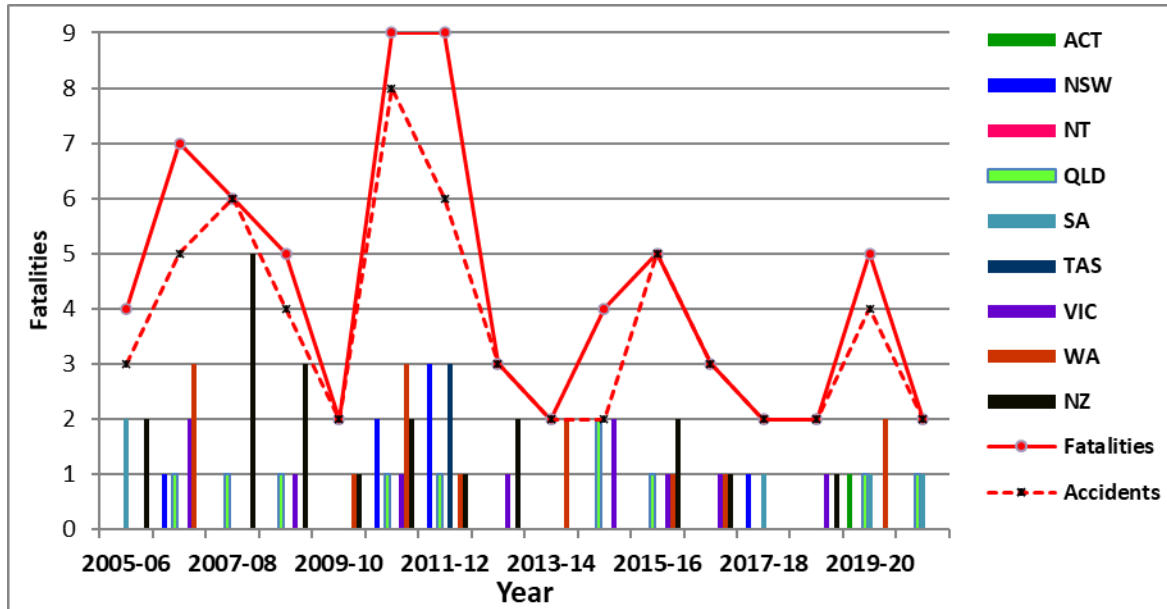
**GRAPH 3.1b Australia & New Zealand gas fatalities
(NG)**

➤ *By state/country*



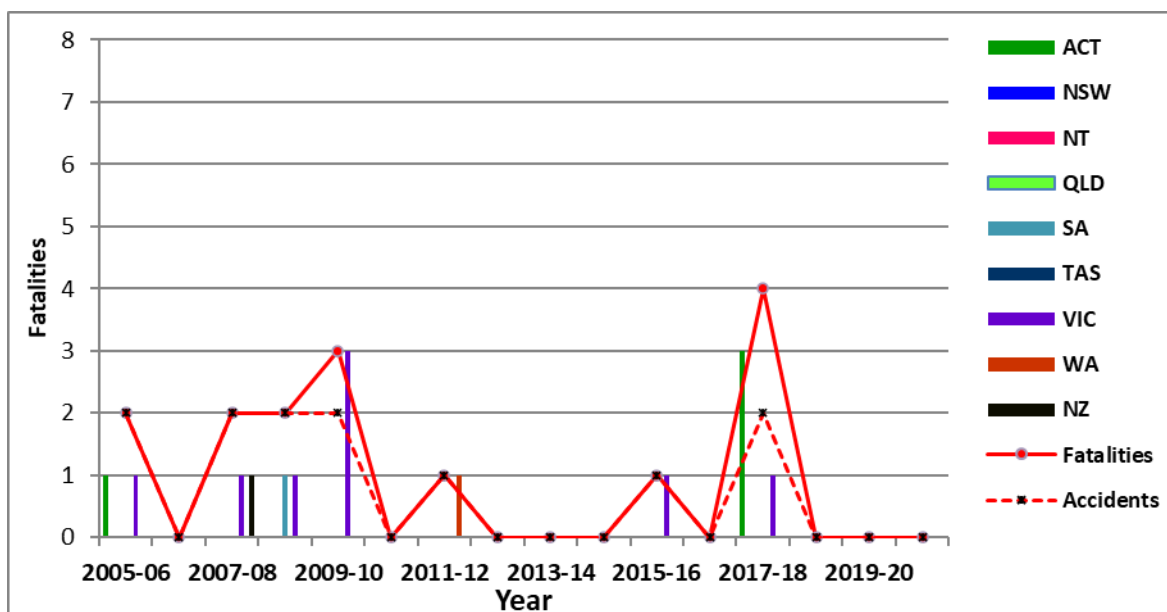
**GRAPH 3.2a Australia & New Zealand gas fatalities
(LPG)**

➤ **By year**



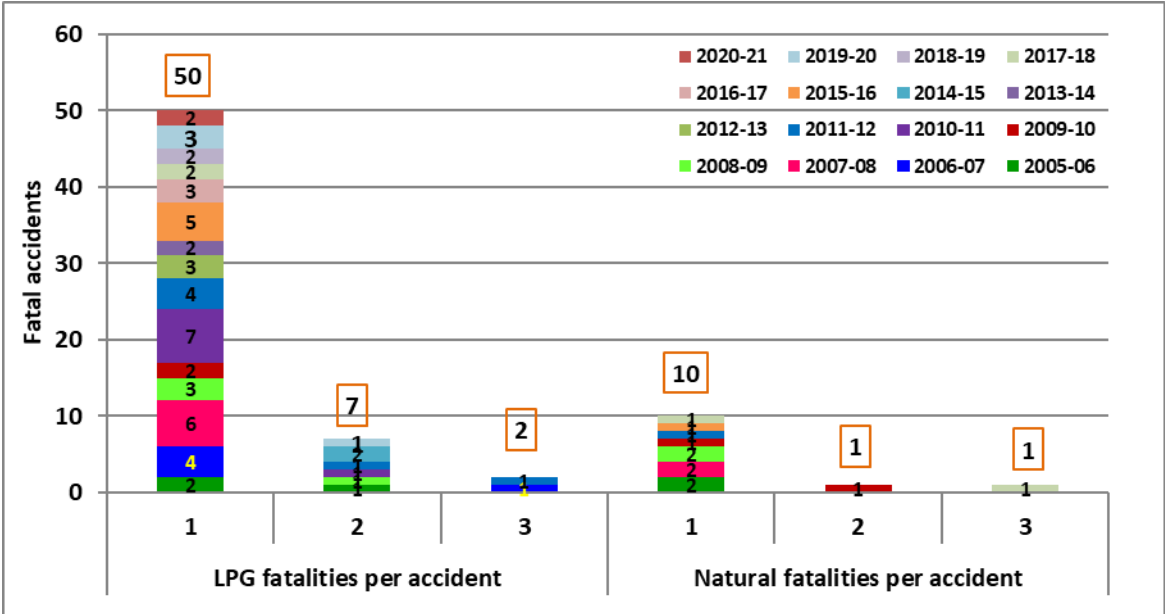
**GRAPH 3.2a Australia & New Zealand gas fatalities
(NG)**

➤ **By type**



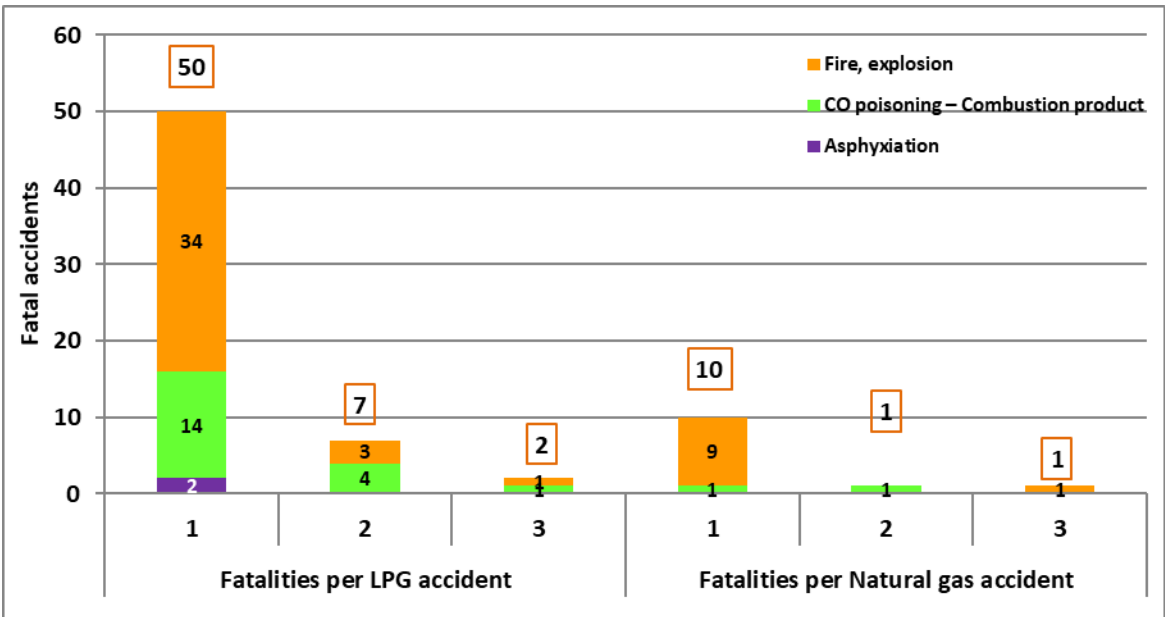
GRAPH 3.3 Australia & New Zealand gas fatalities

➤ *By consequence (fatalities per accident)*



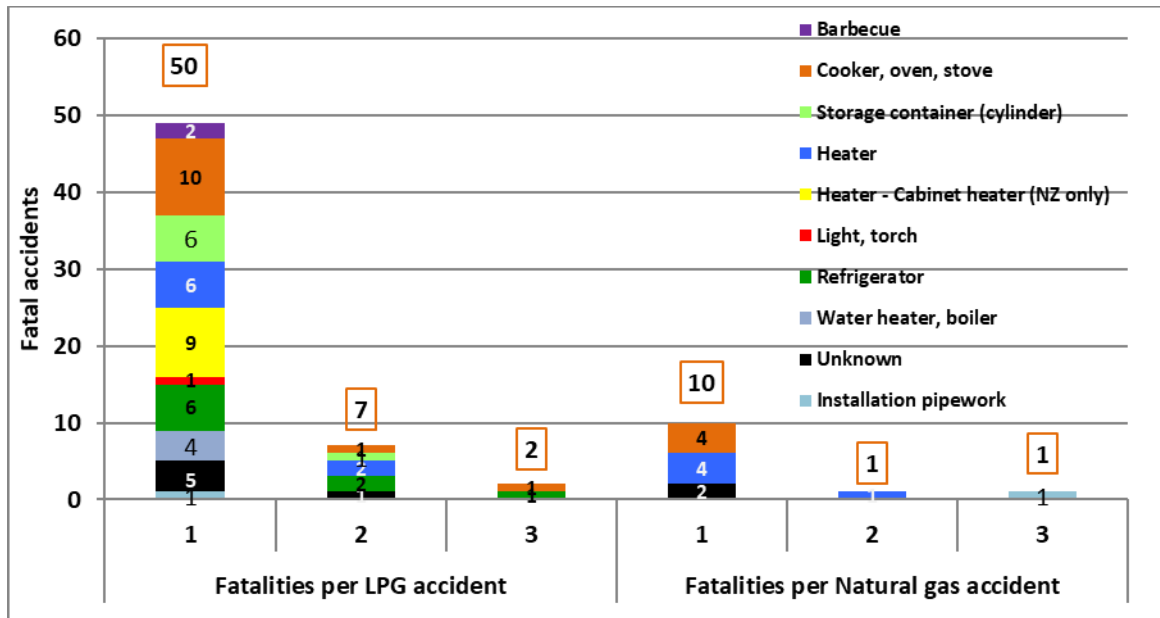
GRAPH 3.4 Australia & New Zealand gas fatalities

➤ *By consequence (fatalities per accident) & accident type*



GRAPH 3.5 Australia & New Zealand gas fatalities

➤ *By consequence & equipment type*



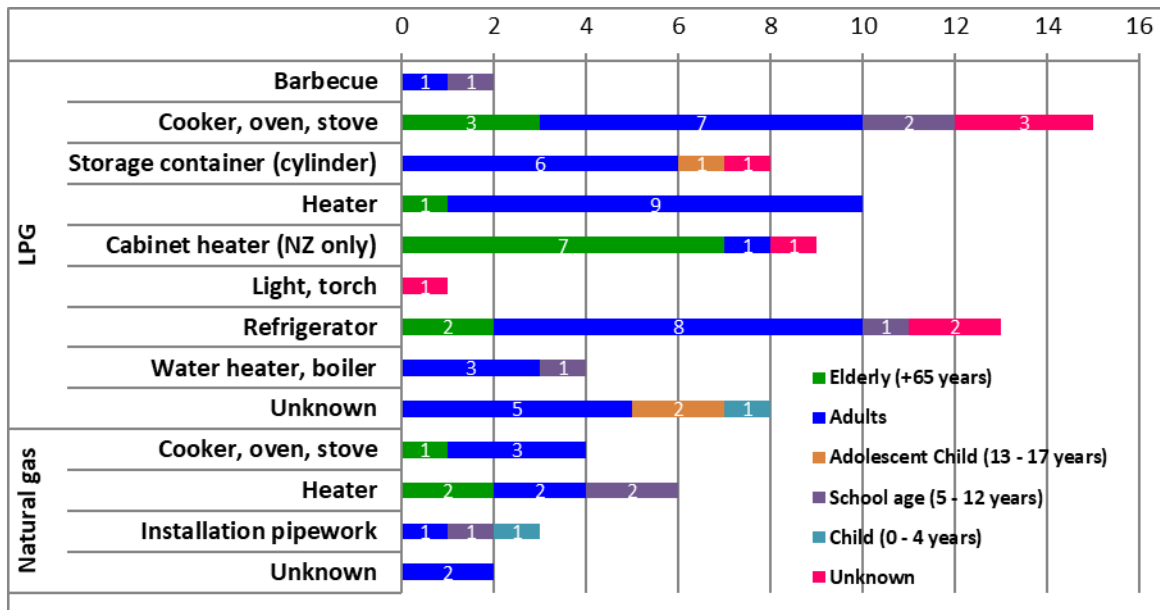
GRAPH 3.6 Australia & New Zealand gas fatalities

➤ *By equipment type & victim's gender*



GRAPH 3.7 Australia & New Zealand gas fatalities

➤ *By equipment type & victim's age*



4. Fatal accidents information

TABLE 4.1 Australia & New Zealand LPG fatal accidents

Year	ACT	NSW	NT	QLD	SA	TAS	VIC	WA	Aust	NZ	Total
2005-2006			#		1				1	2	3
2006-2007		1	#	1			2	1	5	0	5
2007-2008			#	1					1	5	6
2008-2009			#	1			1		2	2	4
2009-2010			#					1	1	1	2
2010-2011		2	#	1			1	2	6	2	8
2011-2012		2	#	1		1		1	5	1	6
2012-2013		#	#				1	1	2	2	4
2013-2014		#	#					1	1	0	1
2014-2015			#	1			1		2	0	2
2015-2016			#	1			1	1	3	2	5
2016-2017			#				1	1	2	1	3
2017-2018		1			1				2	0	2
2018-2019			#				1		1	1	2
2019-2020	1		#	1	1			1	4		4
2020-2021			#	1	1				2		2
Total	0	6	0	9	4	1	9	10	40	19	59

Note: # No data supplied.

TABLE 4.2 Australia & New Zealand LPG fatalities

Year	ACT	NSW	NT	QLD	SA	TAS	VIC	WA	Aust	NZ	Total
2005-2006			#		2				2	2	4
2006-2007		1	#	1			2	3	7	0	7
2007-2008			#	1					1	5	6
2008-2009			#	1			1		2	3	5
2009-2010			#					1	1	1	2
2010-2011		2	#	1			1	3	7	2	9
2011-2012		3	#	1		3		1	8	1	9
2012-2013		#	#				1	1	2	2	4
2013-2014		#	#					1	1	0	1
2014-2015			#	2			2		4	0	4
2015-2016	0		#	1			1	1	3	2	5
2016-2017	0		#				1	1	2	1	3
2017-2018	0	1			1				2	0	2
2018-2019	0		#				1		1	1	2
2019-2020	1		#	1	1			2	5		5
2020-2021			#	1	1				2		2
Total	1	7	0	10	5	3	10	14	50	20	70

Note: # No data supplied

TABLE 4.3 Australia & New Zealand NG fatal accidents

Year	ACT	NSW	NT	QLD	SA	TAS	VIC	WA	Aust	NZ	Total
2005-2006	1		#				1		2		2
2006-2007			#						0		0
2007-2008			#				1		1	1	2
2008-2009			#		1		1		2		2
2009-2010			#				2		2		2
2010-2011			#						0		0
2011-2012			#					1	1		1
2012-2013		#	#						0		0
2013-2014		#	#						0		0
2014-2015			#						0		0
2015-2016			#				1		1		1
2016-2017			#						0		0
2017-2018	1						1		2		2
2018-2019			#						0		0
2019-2020			#						0		0
2020-2021			#						0		0
Total	2	0	0	0	1	0	7	1	11	1	12

Note: # No data supplied.

TABLE 4.4 Australia & New Zealand NG fatalities

Year	ACT	NSW	NT	QLD	SA	TAS	VIC	WA	Aust	NZ	Total
2005-2006	1		#				1		2		2
2006-2007			#						0		0
2007-2008			#				1		1	1	2
2008-2009			#		1		1		2		2
2009-2010			#				3		3		3
2010-2011			#						0		0
2011-2012			#					1	1		1
2012-2013		#	#						0		0
2013-2014		#	#						0		0
2014-2015			#						0		0
2015-2016			#				1		1		1
2016-2017			#						0		0
2017-2018	3						1		4		4
2018-2019			#						0		0
2019-2020			#						0		0
2020-2021			#						0		0
Total	4	0	0	0	1	0	8	1	14	1	15

Note: # No data supplied